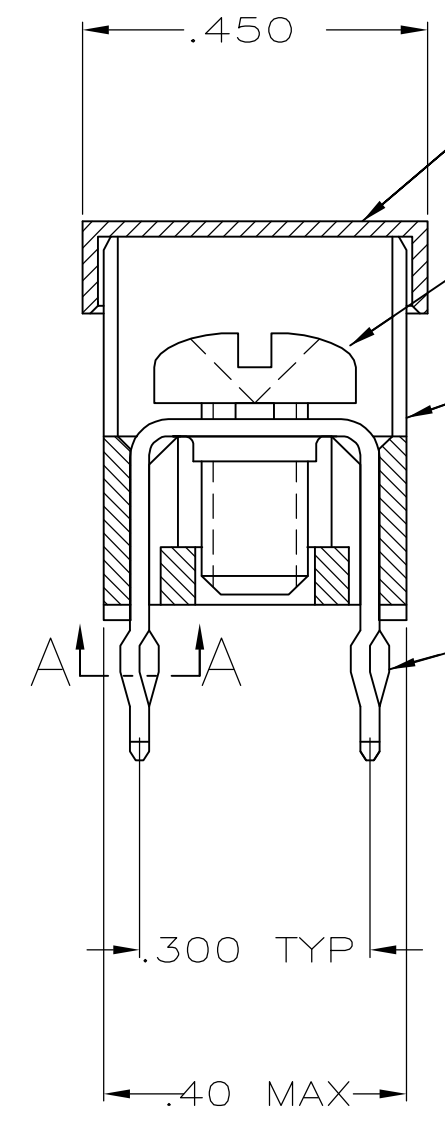
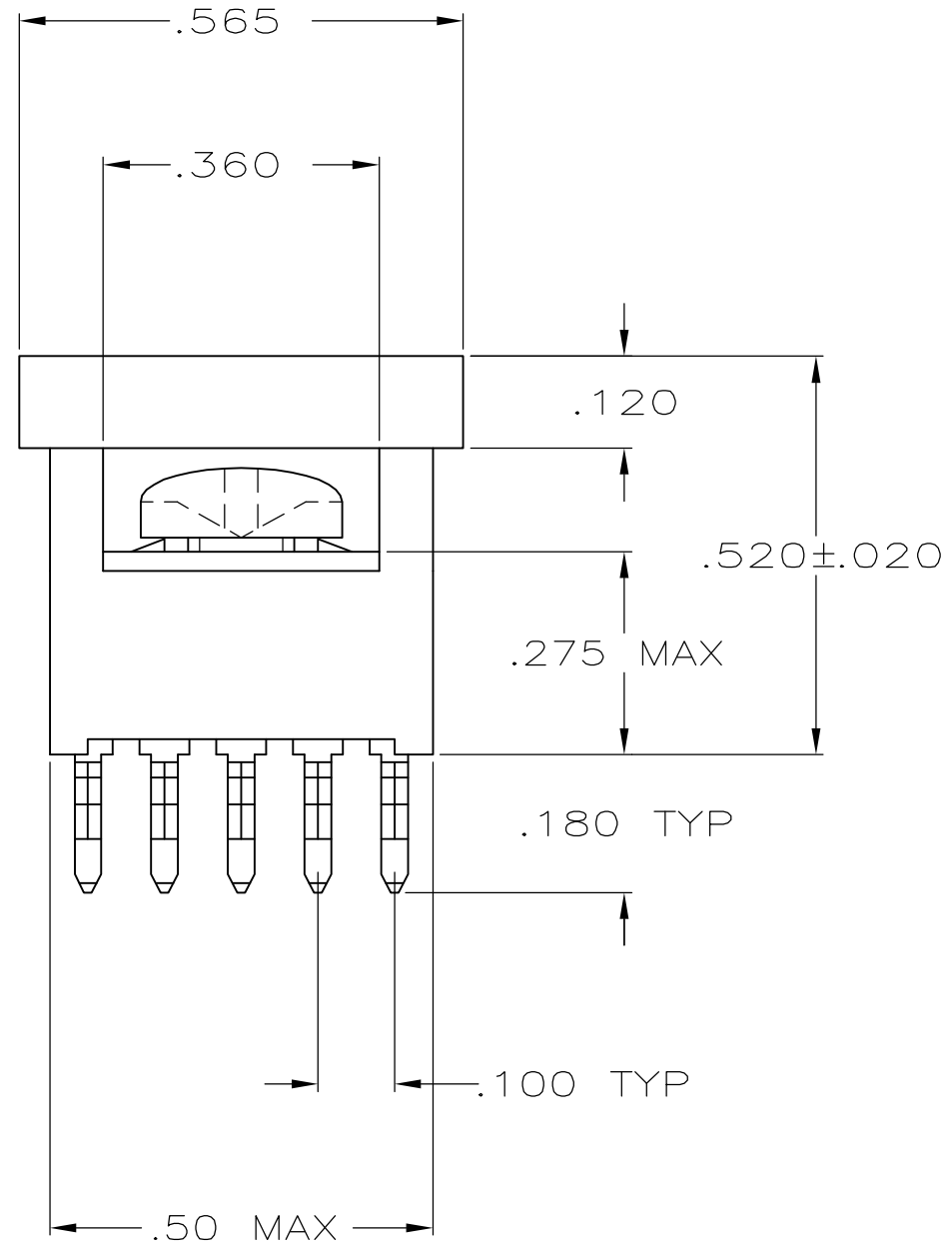


THIS DRAWING IS UNPUBLISHED. RELEASED FOR PUBLICATION
 © COPYRIGHT BY TYCO ELECTRONICS CORPORATION. ALL RIGHTS RESERVED.

LOC	DIST	REVISIONS			
P	LTR	DESCRIPTION	DATE	DWN	APVD
GP	00	A	REV PER EC 0512-0573-04	05-04-05	JA SF



- COVER
 - SCREW, 993879-1
SUPPLIED UNASSEMBLED, SEE TABLE
 - HOUSING
 - TAP
- 1 TO PREVENT THREAD STRIPPING, SCREW TORQUE SHOULD NOT EXCEED 9 IN LBS.
 - 2 TAP HOLE IS 6-32UNC-2B, TWO MIN THREADS.
 - 3 PACKAGED BULK.
 - 4 HOUSING: NYLON.
TAP: COPPER ALLOY 725, .025 THICK
 - 5 TAP: .000150 MATTE TIN OVER .000050 NICKEL
 6. REFERENCE APPLICATION SPECIFICATION 114-11000 FOR DRILL HOLE SIZES AND FINISHES.



SECTION A-A
 SCALE 10:1
 10 PLACES

3	YES	YES	5055557-4
3	YES	NO	5055557-3
PACKAGING	HOUSING AND TAP ASSEMBLED	SCREW	PART NO.

THIS DRAWING IS A CONTROLLED DOCUMENT.		DWN J. ALCORTA - 05-04-05 DOCK5	Tyco Electronics Corporation Harrisburg, PA 17105-3608	
DIMENSIONS: INCHES		CHK A. FRANTUM 05-04-05	Tyco Electronics Corporation	
TOLERANCES UNLESS OTHERWISE SPECIFIED:		APVD S. FLICKINGER 05-04-05	NAME	
0 PLC ± -	1 PLC ± -	PRODUCT SPEC	TAP ASSEMBLY, POWER DISTRIBUTION	
2 PLC ± -	3 PLC ± .010	108-11030	SIZE	CAGE CODE
4 PLC ± -	ANGLES ± -	114-11000	A3	00779
MATERIAL	FINISH	WEIGHT	DRAWING NO	
4	5	-	C-5055557	
CUSTOMER DRAWING			RESTRICTED TO	-
SCALE 4:1			SHEET 1 OF 1	REV A