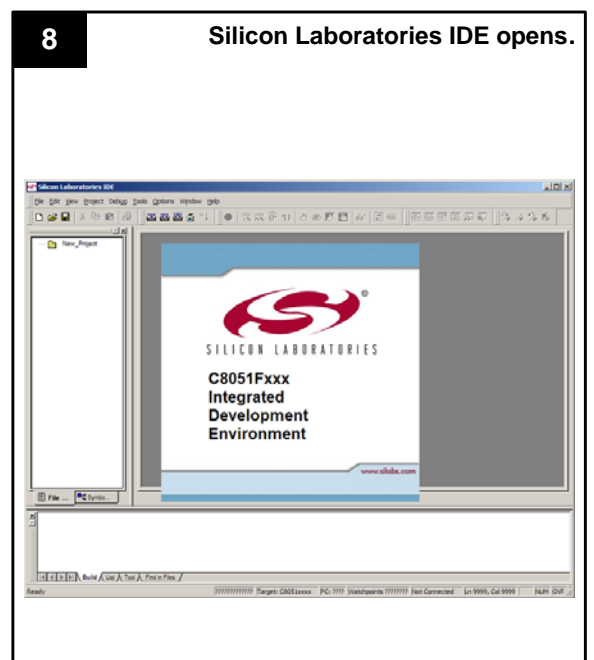
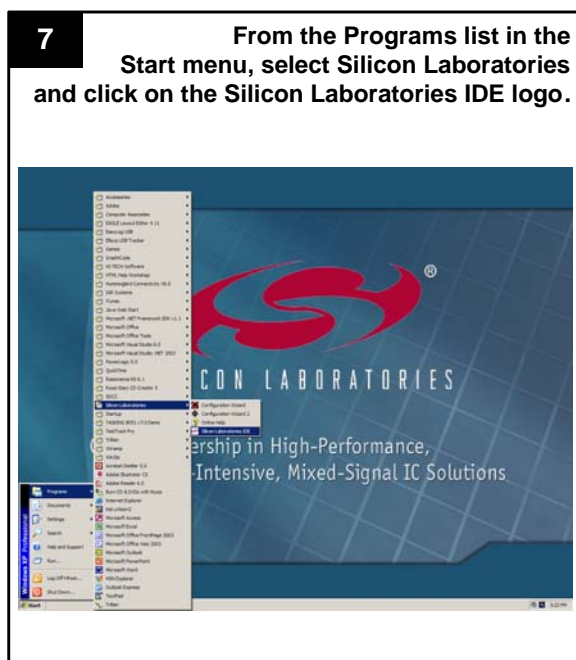
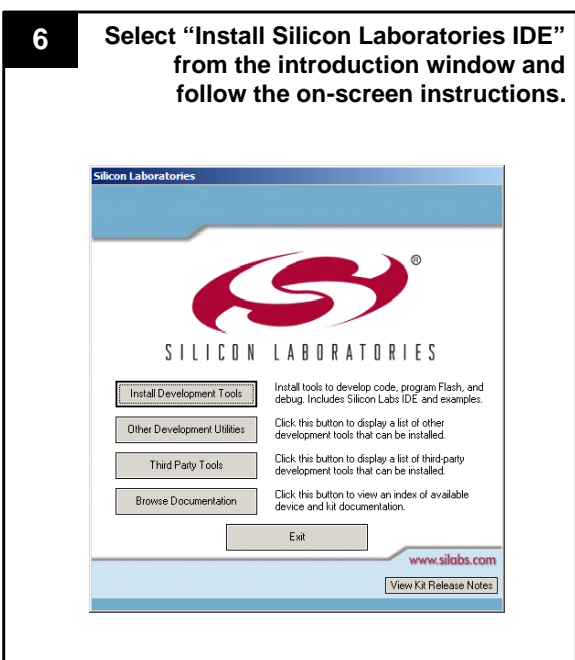
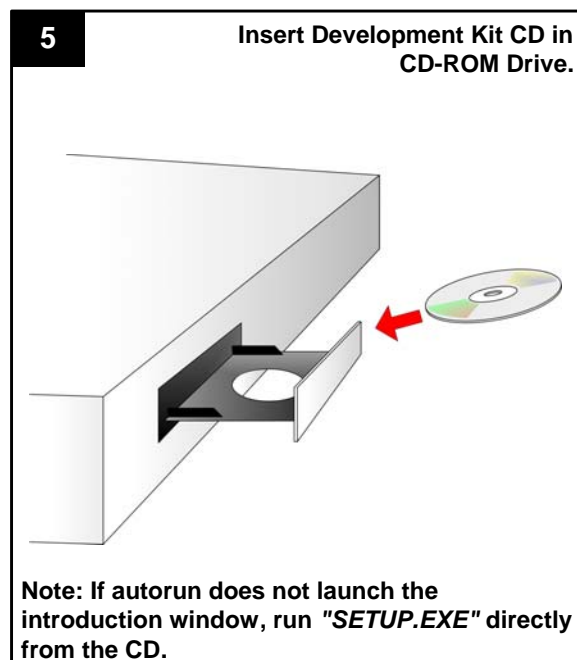
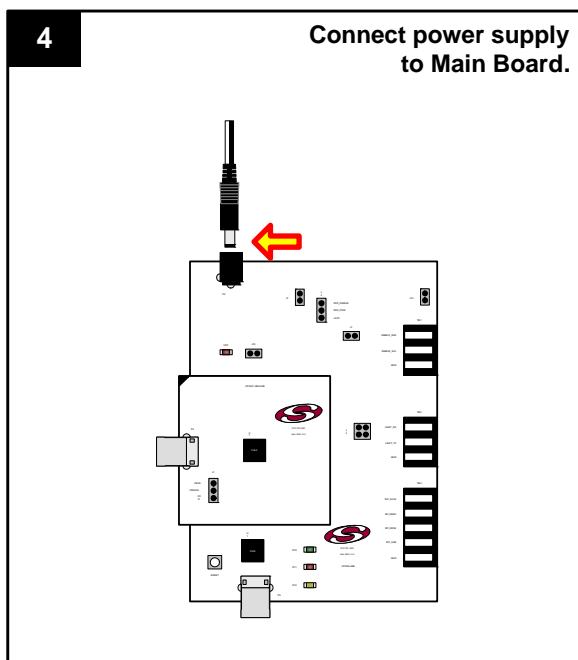
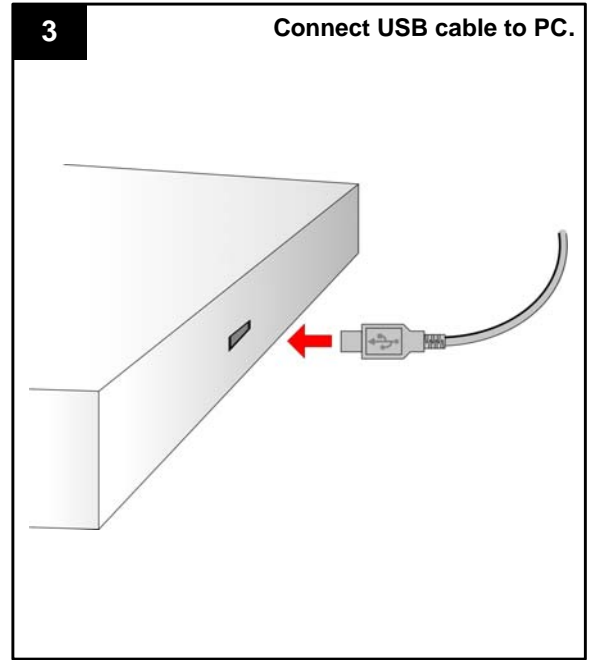
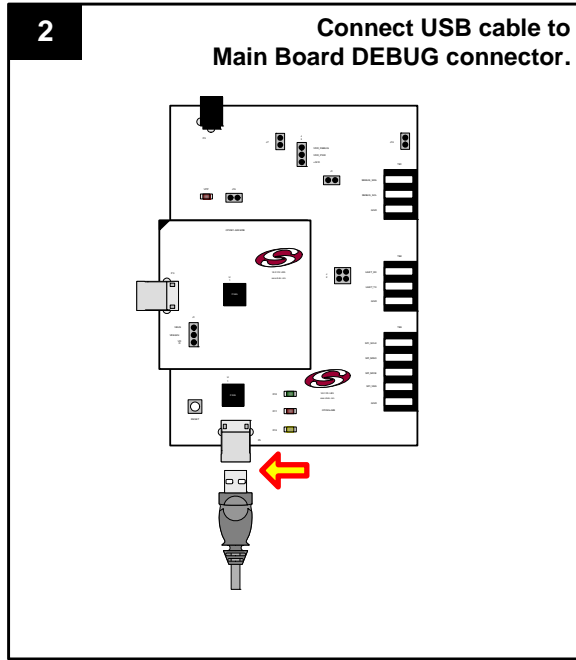
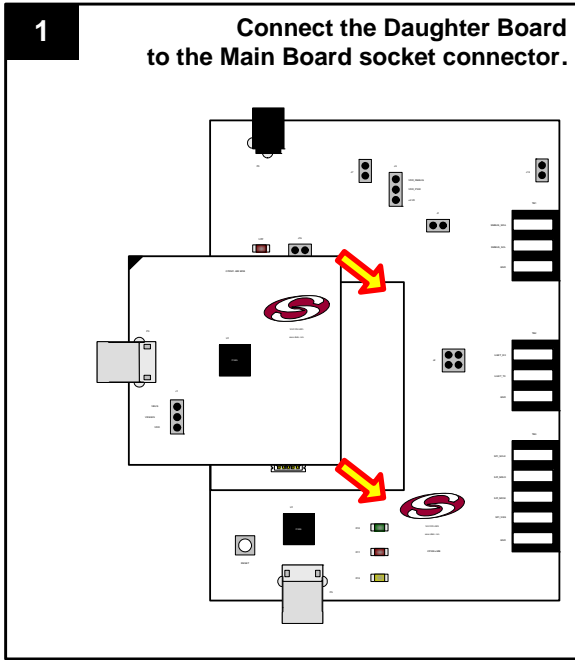
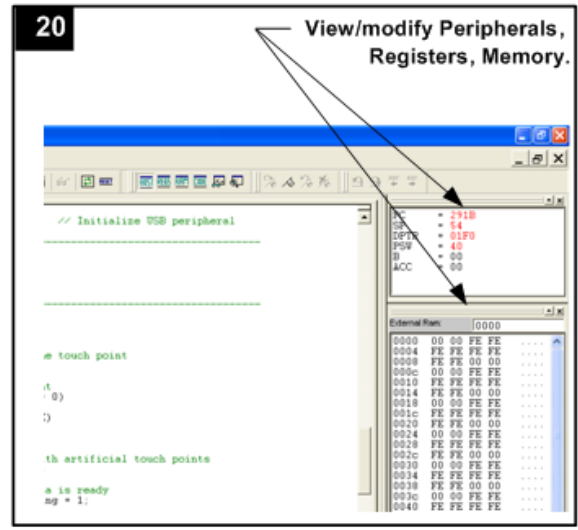
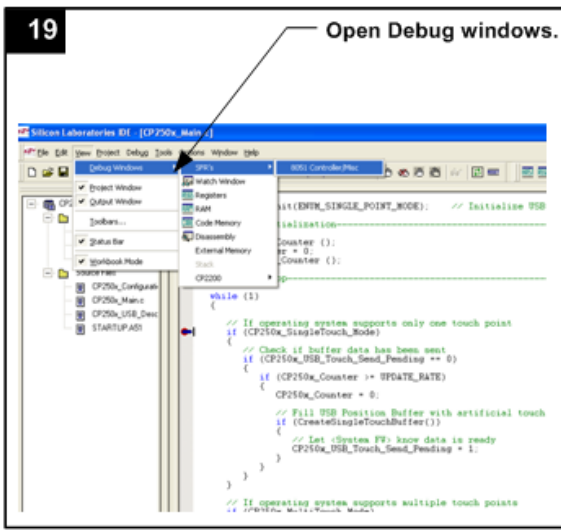
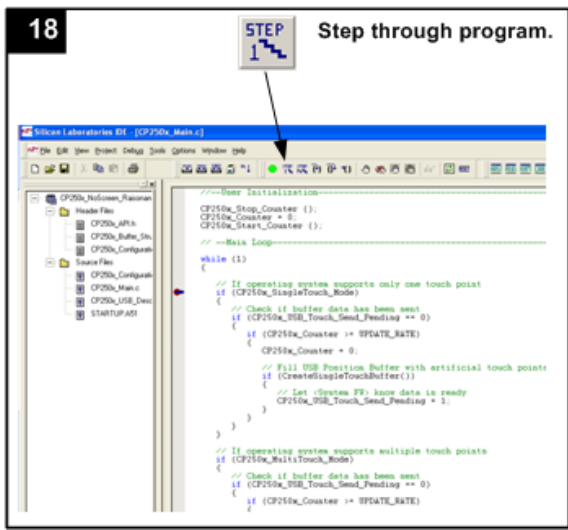
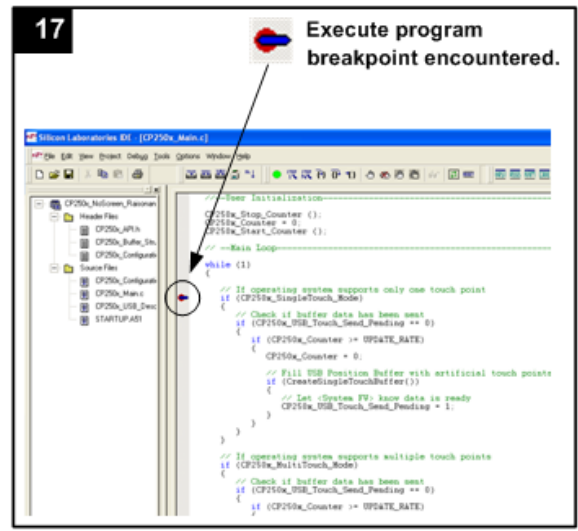
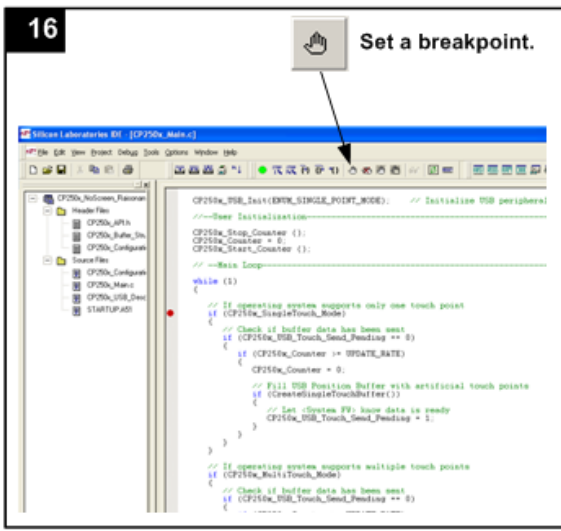
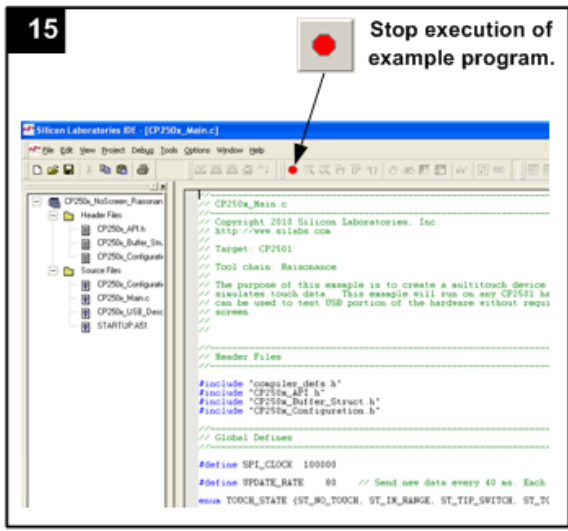
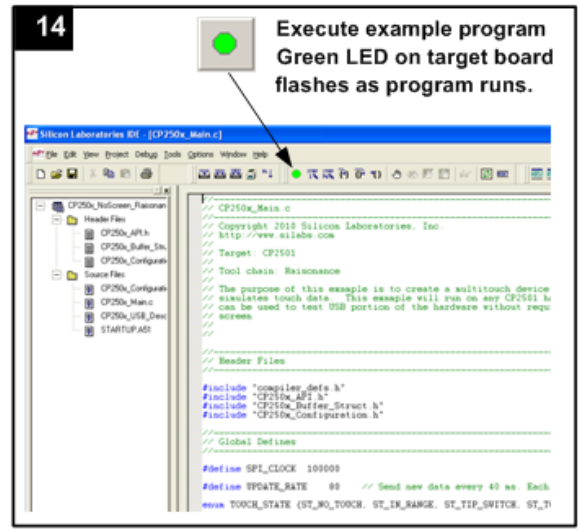
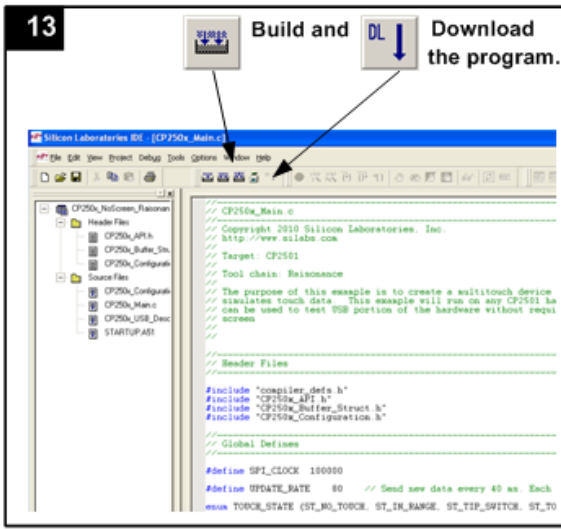
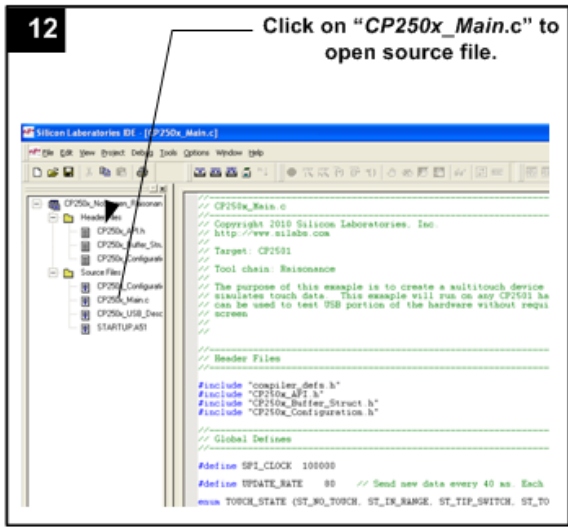
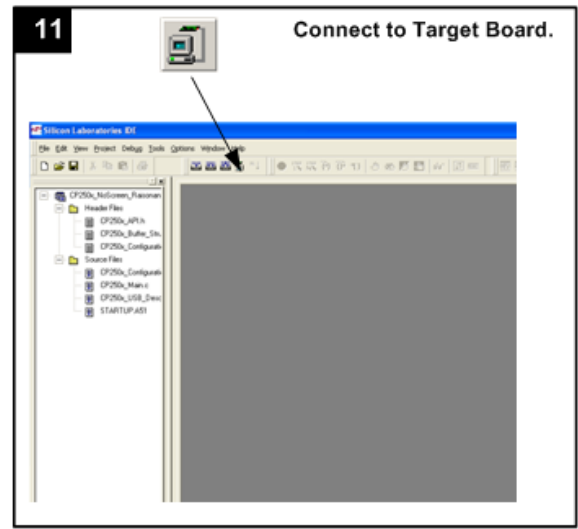
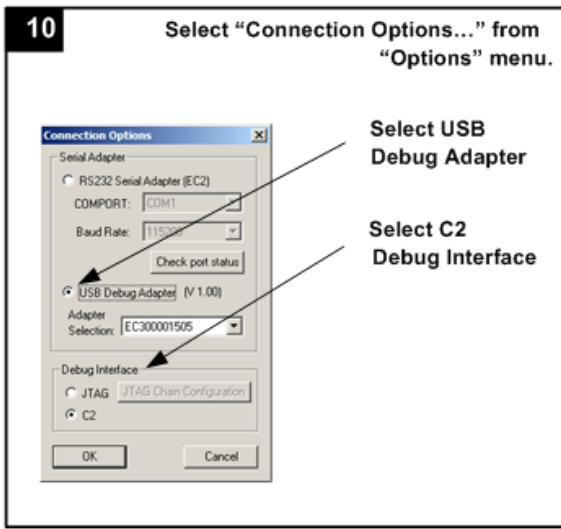
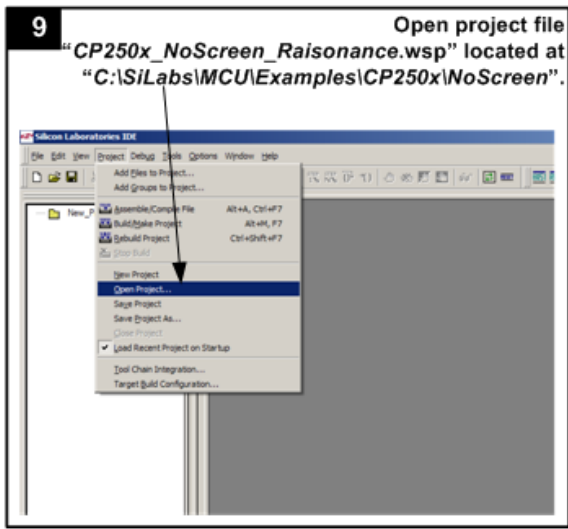


CP2501DK DEVELOPMENT KIT QUICK-START GUIDE

Installation



Example Program



If you are having trouble installing and/or using the development kit, please use the following support resources:

- CP2501 Development Kit User's Guide (click "Browse Documentation" from the CD introduction window)
- Latest versions of Application Notes can be found at <http://www.silabs.com/products/microcontroller/applications.asp>
- MCU Knowledgebase (available at www.silabs.com → SUPPORT)
- Contact an Applications Engineer using the online information request form (available at www.silabs.com → SUPPORT).