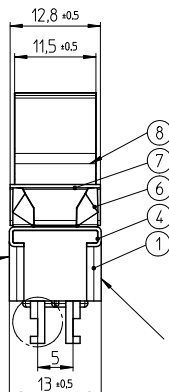
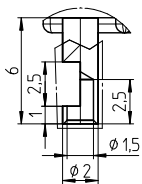


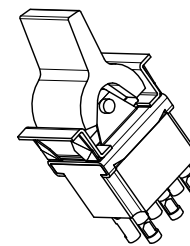
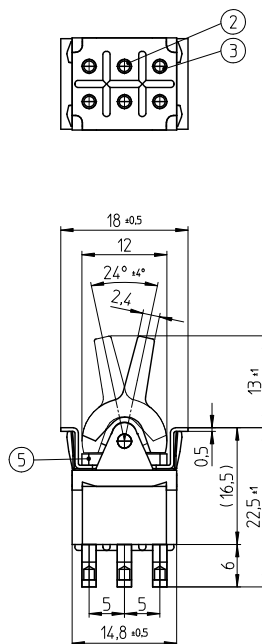
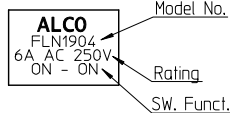
Detail A
Scale 5:1



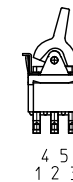
Detail A

Printing of Logo and Rating

Date Code Printing
last digit of year
A-L = January to December
Day

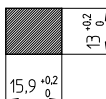


Function Chart



TE PN	Button	Part	Terminals 1 and 2 4 and 5	Terminals 2 and 3 5 and 6
2-6437630-6	white	FLN1904	ON	ON
3-6437630-7	black	FLN1904	ON	ON
2-6437630-7	red	FLN1904	ON	ON

Panel Cutout
thickness 1 to 2.5mm



Specifications

TE PN	Part	Rating	Initial Contact Resistance	Insulation Resistance	Dielectric Strength	Endurance
2-6437630-6 3-6437630-7 2-6437630-7	FLN1904	AC 125V 6A AC 250V 6A	MAX 10 milliohms at DC 2 ~ 4V 1A	MIN 1000 M Ohms at DC 500V	AC 1kV/1min (AC 1.2kV/1sec)	electrically 50,000 cycles at 20 cycles/minute (rated load resistive) mechanically 100,000 cycles at 20 cycles/minute

Materials Chart

Part No.	Part Name	Material/Surface	Optional Description
1	Case	Polyester Resin	Black
2	Common	C3602BD	Ep-Cu/Ni 3,Au F b
3	Fixed contact	C3602BD+Ag	Ep-Cu/Ni 3,Au F b
4	Frame	SUS	
5	Mounting Sleeve	C3602BD	Ep-Cu/Ni 3 b
6	Leaf spring	SUS	
7	Plate	SUS	
8	Button	Nyron Resin	

TOLERANCES UNLESS OTHERWISE SPECIFIED ACCORDING TO ISO 8015 and ISO 2768-1
 DIMENSIONS: mm
 Test dimen. / Prüfmaß: □; auxiliary dimen. / Hilfsmaß: (); theor. dimen. / theor. Maß: □
 production control dimen. / Fertigungs-kontr.maß: [] ; dimen. for measure. technology / messtechn. rel. Maß: [] ;

DEPARTMENT	D&E
DRAWER	04.012007 SA008712
CHECKED	
APPROVED	

ECR-NO: DATE NAME INFO DATE NAME
 SCALE: NAME: DWG NO: **1968521**
 OPTIONAL NO: Customer Drawing
 REPLACEMENT FOR: DWG LOC NO: IF SHEET: 1 OF 1 REVISION: A A 2

THIS INFORMATION IS CONFIDENTIAL AND PROPRIETARY TO TYCO ELECTRONICS AUSTRIA GMBH AND ITS WORLDWIDE SUBSIDIARIES AND AFFILIATES. IT MAY NOT BE DISCLOSED TO ANYONE OTHER THAN TYCO ELECTRONICS PERSONNEL, WITHOUT WRITTEN AUTHORIZATION FROM TYCO ELECTRONICS AUSTRIA.