

APPLICATOR STYLE CONVERSION CHART

PART NUMBER	REVISION	DESCRIPTION	FEED TYPE	CONVERT TO						
				CONVERT TO	PART NUMBERS REQUIRED					
2150222-1	B	FINE CRIMP HEIGHT ADJUST	MECHANICAL	PNEUMATIC FEED	2119950-1	2119792-1	-	2119641-1	-	2063440-1
				SERVO LATCH PLATE	2119951-1	1901697-1	8-2150222-5	-	-	2168400-7 (QUANTITY 2)
				SMART APPLICATOR	2161326-1	-	8-2150222-4	-	-	-
				MECHANICAL FEED	2119949-1	2063961-1	5-18022-5	2119653-1	-	-
				SERVO LATCH PLATE	2119951-1	1901697-1	8-2150222-5	-	-	2168400-7 (QUANTITY 2)
				SMART APPLICATOR	2161326-1	-	8-2150222-4	-	-	-
				MECHANICAL FEED	2119949-1	2063961-1	5-18022-5	2119653-1	-	-
2150222-2	B	FINE CRIMP HEIGHT ADJUST	PNEUMATIC	PNEUMATIC FEED	2119950-1	2119792-1	-	2119641-1	-	2063440-1
				SERVO LATCH PLATE	2119951-1	1901697-1	8-2150222-5	-	-	2168400-7 (QUANTITY 2)
				SMART APPLICATOR	2161326-1	-	8-2150222-4	-	-	-
2150222-5	B	FINE CRIMP HEIGHT ADJUST	SERVO LATCH PLATE	-	-	-	-	-	-	
2150222-6	B	NON-CRIMP HEIGHT ADJUST	SERVO LATCH PLATE	-	-	-	-	-	-	
2150222-7	B	FINE CRIMP HEIGHT ADJUST	NONE	-	-	-	-	-	-	
7-2150222-7	A	CRIMP TOOLING KIT	-	-	-	-	-	-	-	

APPLICATOR DATA

CRIMP SIZE	TYPE
WIRE 1.40 mm [0.055]	F
INSUL 2.29 mm [0.090]	F

APPL INSTRUCTIONS 408-10390

TERMINAL DATA: G.H./LEAR TERMINAL TE CRIMP SPEC

TERMINAL NAME: RECEPTACLE 3.1 FASTON

WIRE STRIP LENGTH .213-.223 IN [5.41-5.66 mm]	INSULATION DIAMETER RANGE Ø.080-.100 IN [2.03-2.54 mm]
TERMINAL APPLICATION SPECIFICATION 114-2025	-

TERMINALS APPLIED

TE TERMINAL 2113211-1	G.H./LEAR TERMINAL 22246.124.186	TE TERMINAL	G.H./LEAR TERMINAL
--------------------------	-------------------------------------	-------------	--------------------

WIRE SIZE	CRIMP HEIGHT mm [INCH]	CRIMP HEIGHT REFERENCE SETTING
0.60mm2	1.14+/-0.05 [0.045+/-0.002]	5.7
0.50mm2	1.09+/-0.05 [0.043+/-0.002]	6.3
0.35mm2	1.02+/-0.05 [0.040+/-0.002]	7.1
0.30mm2	0.99+/-0.05 [0.039+/-0.002]	7.4

- RECOMMENDED SPARE PARTS**
- GREASE BEARING SURFACES LIGHTLY
3. LUBRICATE DAILY PER THE APPLICATOR INSTRUCTION SHEET SUPPLIED WITH THE APPLICATOR.
4. APPLICATOR SPECIFIC DATA TO BE ENTERED INTO BLANK MEMORY CHIP AT ASSEMBLY. SEE BELOW FOR PART NUMBER:
- MECHANICAL FEED WITH "SMART APPLICATOR" CONVERSION: 8-2150222-4
 - PNEUMATIC FEED WITH "SMART APPLICATOR" CONVERSION: 8-2150222-4
 - SERVO FEED WITH "FINE CRIMP HEIGHT ADJUST": 8-2150222-5
 - SERVO FEED WITH "NON-CRIMP HEIGHT ADJUST": 8-2150222-6
5. ADJUSTMENT OF THE STRIPPER MAY BE REQUIRED WHEN MOVING THE APPLICATOR BETWEEN BENCH AND LEADMAKER APPLICATIONS.
6. APPLY PART NUMBER 1-23419-5 LOCTITE TO THREADS OF ITEM 50.
7. GREASE THREADS, GROOVE AND O-RING ON ITEMS 35 & 252.
8. MAGNET, ITEM 166 MUST BE ORIENTED CORRECTLY IN ORDER TO PROPERLY ACTUATE THE COUNTER.
9. CRIMP HEIGHT REFERENCE SETTING WAS THE SETTING USED WHEN THE APPLICATOR WAS QUALIFIED AT THE FACTORY. ADJUSTMENT MAY BE NECESSARY WHEN RUNNING APPLICATOR IN THE FIELD.
10. SPARE FEED CAM STORAGE LOCATION REFER TO INSTRUCTION SHEET FOR ADDITIONAL INFORMATION.
11. THE RECOMMENDED SET-UP FOR END FEED APPLICATORS IS POST-FEED WITH ITEM 2119653-1. THE APPLICATOR CAN BE CONFIGURED FOR PRE-FEED WITH ITEM 2119652-1 BUT MAY ENCOUNTER PROBLEMS WITH SOME APPLICATIONS. FEED ISSUES OR TERMINAL JAMMING MAY OCCUR IN THE PRE-FEED CONFIGURATION.
12. WHEN ASSEMBLING -6 NON-CRIMP HEIGHT ADJUST APPLICATOR USE SHIM PACK 2119957-2 TO ALIGN APPLICATOR'S MAXIMUM WIRE CRIMP HEIGHT AT NORMAL TERMINATOR SHUT HEIGHT

***WARNING**
ON INSTALLATION, SET WIRE DISC, ITEM 40 TO LARGEST WIRE SIZE SETTING. USE OF SETTINGS BELOW MINIMUM REQUIRED CRIMP HEIGHT SETTING WILL CAUSE DAMAGE TO CRIMP TOOLING.

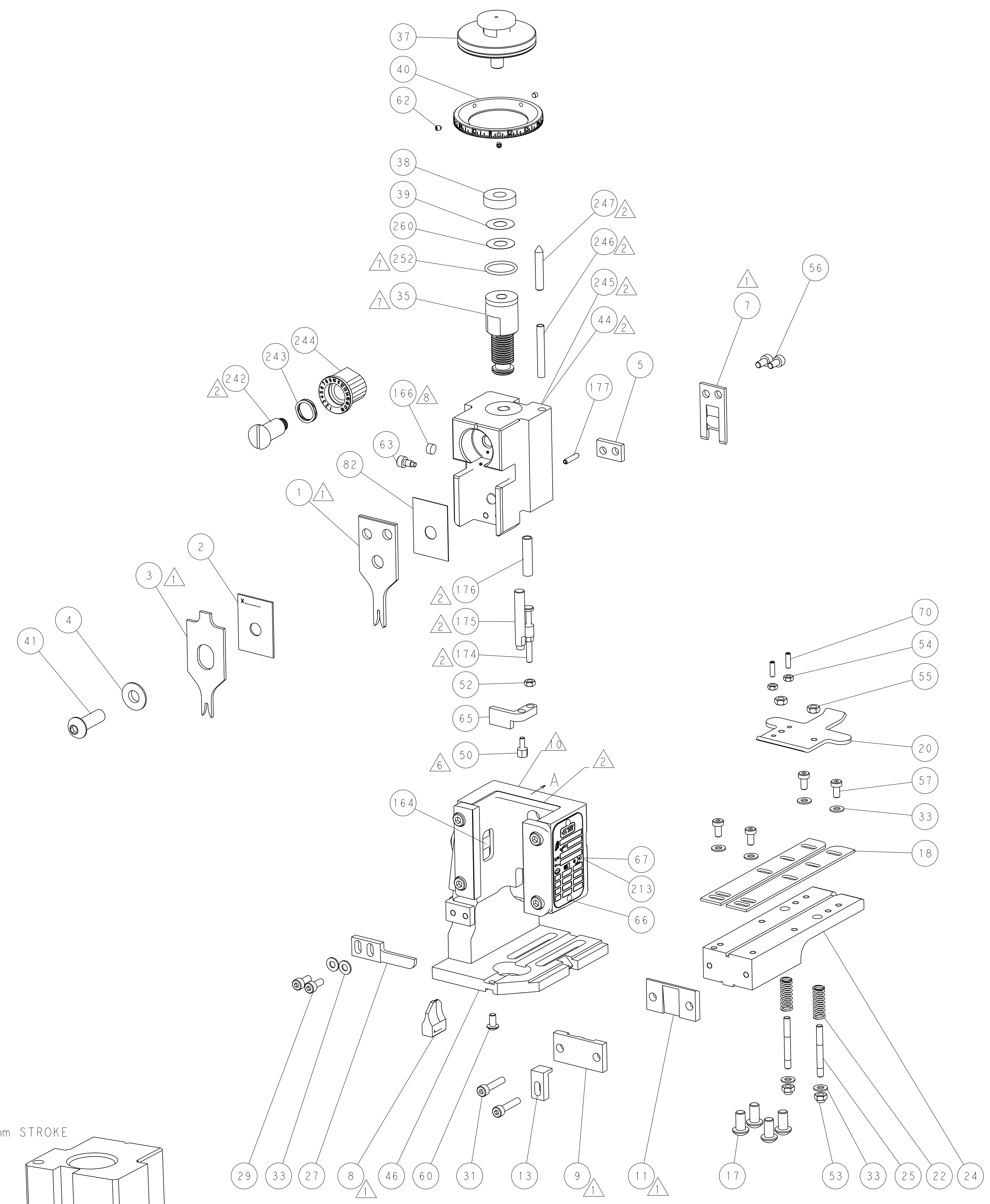
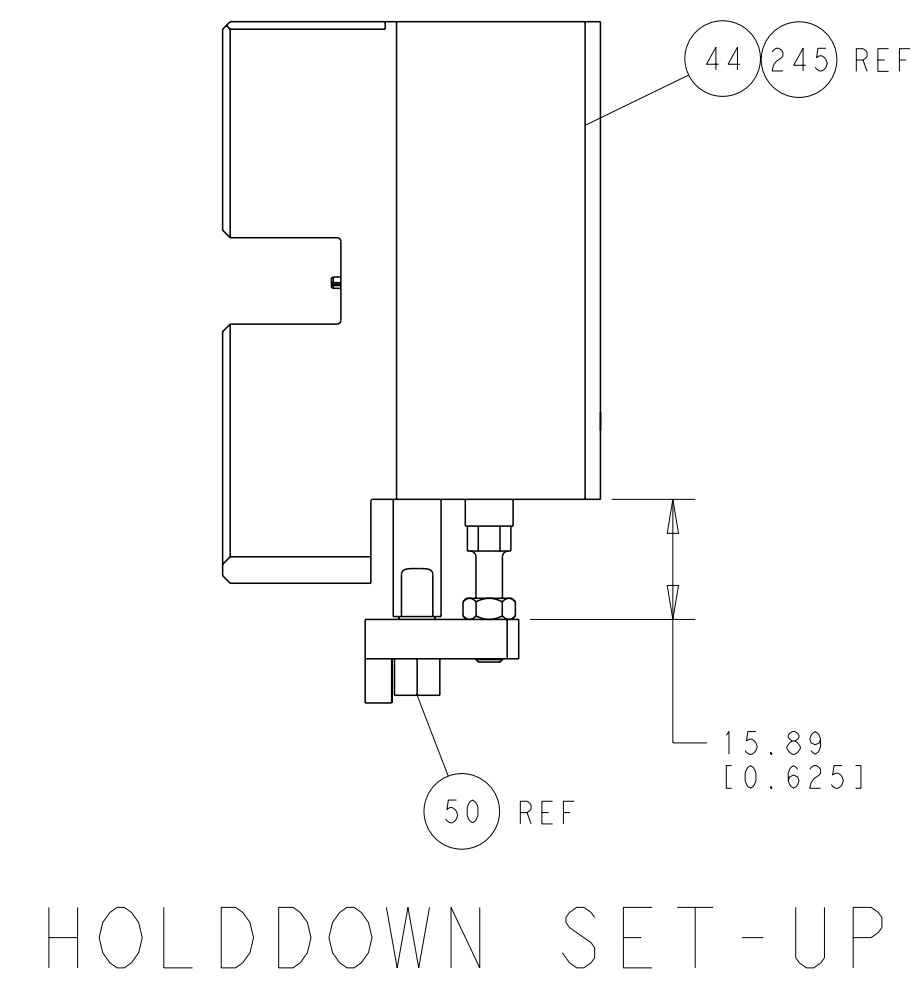
-	-	1	-	-	-	2119957-2	APPLICATOR SHIM PACK	260
-	-	1	-	1	1	8-21084-0	O-RING, .676 ID, .070 DIA. MAT.	252
-	-	-	-	1	-	2119640-1	PUSH ROD, AIR FEED	250
-	-	-	-	1	-	2079988-1	BUSHING, LCH5-12, MISUMI	249
-77	-7	-6	-5	-2	-1	PART NO	DESCRIPTION	ITEM NO

ATLANTIC VERSION
Shown on sheets 1 of 4 & 2 of 4
(Pacific version shown on sheets 3 of 4 & 4 of 4)

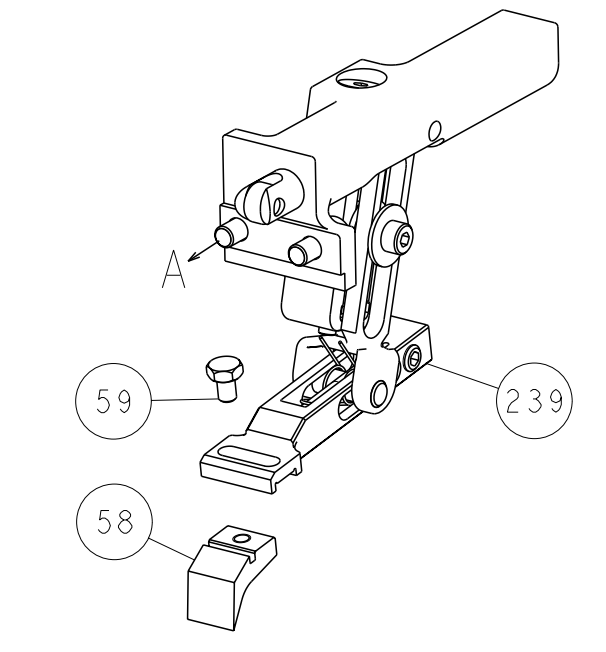
REVISIONS									
SET UP GAUGE 2119599-2		LOC A	DIST 66	P	LTN	DESCRIPTION	DATE	OWN	APVD
-	-	-	-	1	-	2119641-1	FEED CAM, AIR FEED	248	-
-	-	-	-	1	1	2119798-1	DETENT PIN	247	-
-	-	-	-	1	1	1-22279-3	SPRING, COMPRESSION	246	-
-	-	-	-	-	-	2119759-1	RAM, AMP STYLE, END FEED, NON-ADJUST	245	-
-	-	-	-	1	1	2119082-9	CAM, SNAIL, INSULATION ADJUSTMENT	244	-
-	-	-	-	1	1	2079764-1	WASHER, WAVE SPRING, CREST-TO-CREST	243	-
-	-	-	-	1	1	2119083-1	RETAINER, INSULATION DIAL	242	-
-	-	-	-	2	2	2168400-7	SHCS, LOW HEAD, RoHS, M5 X 10	240	-
-	-	-	-	-	-	2119580-1	MECHANICAL FEED ASSEMBLY	239	-
-	-	-	-	-	-	2063440-1	AIR FEED MODULE	238	-
-	-	-	-	1	-	2119740-2	TAG, IDENTIFICATION	213	-
-	-	REF	REF	-	-	1901697-1	FEED FINGER ASSEMBLY, EF	183	-
-	-	1	1	1	1	6-993111-6	PIN, SLOTTED SPRING 3.0 X 14.0	177	-
-	-	1	1	1	1	8-22280-7	SPRING, COMPRESSION	176	-
-	-	1	1	1	1	1752353-2	GUIDE PIN, HOLDDOWN	175	-
-	-	1	1	1	1	1901680-2	GUIDE PIN, HOLDDOWN	174	-
-	-	-	-	-	2	21045-3	RING, RETAIN, EXTERN, 3/16 CRESCENT	172	-
-	-	1	1	1	1	994969-1	MAGNET, RARE EARTH HIGH ENERGY	166	-
-	-	REF	REF	REF	REF	994970-2	COUNTER, MAGNETIC	164	-
-	-	-	-	-	-	240638-1	SPRING, FEED FINGER	163	-
-	-	-	-	-	-	3-23627-7	PIN, RETAIN, GRVD, 3/16 X .854	137	-
-	-	REF	REF	-	-	SEE NOTE 4	MEMORY CHIP, PROGRAMMED	135	-
-	-	1	1	-	-	1633743-1	SERVO FEED LATCH ASM	133	-
-	-	1	1	1	1	455888-3	SPACER, CRIMPER	82	-
-	-	1	1	1	1	2119956-2	DOCUMENTATION PACKAGE	71	-
-	-	2	2	2	2	2-18032-2	SCR, SET, FLT POINT M3 X 10.0	70	-
-	-	1	-	-	1	2119740-1	TAG, IDENTIFICATION	67	-
-	-	2	2	2	2	2168078-1	SCREW, DRIVE, RH, RoHS	66	-
-	-	1	1	1	1	1901681-5	HOLDDOWN, TERMINAL	65	-
-	-	1	-	-	1	2119793-1	LIMITER, ADJUSTMENT BOLT	63	-
-	-	3	-	-	3	992763-5	SCR, SET, SOC, CONE POINT, M3 X 4.0	62	-
-	-	1	1	1	1	2079383-4	SCR, BHSC, RoHS (M4 X 8)	60	-
-	-	-	-	-	-	5-18022-5	SCR, HEX HD CAP, M4 X 6.0	59	-
-	-	-	-	-	-	2063961-1	FEED FINGER	58	-
-	-	4	4	4	4	2168400-4	SHCS, LOW HEAD, RoHS, M4 X 8	57	-
-	-	2	2	2	2	2168083-2	SCR, SKT HD CAP, RoHS, M4 X 8.0	56	-
-	-	2	2	2	2	5018030-2	NUT, HEX, REG, RoHS, M4	55	-
-	-	2	2	2	2	5018030-1	NUT, HEX, REG, RoHS, M3	54	-
-	-	2	2	2	2	986965-8	NUT, LOCK, HEX, TORQUE (M4)	53	-
-	-	1	1	1	1	1-5018030-0	NUT, HEX, REG, RoHS, M3.5	52	-
-	-	-	-	-	-	2119792-1	PAWL, EF, AIR	51	-
-	-	1	1	1	1	1752354-4	STANDOFF, HOLD-DOWN	50	-
-	-	-	-	-	2	18023-9	SCR, SKT HD CAP M4 X 6.0	49	-
-	-	-	-	-	-	2119652-1	FEED CAM, PRE FEED	48	-
-	-	-	-	-	-	2119653-1	FEED CAM, POST FEED	47	-
-	-	1	1	1	1	2119655-5	APPLICATOR BASIC ASSEMBLY, EF	46	-
-	-	1	-	-	1	2119369-1	RAM, AMP STYLE, END FEED	44	-
-	-	1	1	1	1	2079383-7	SCR, BHSC, RoHS (M8 X 25)	41	-
-	-	1	-	-	1	2119645-1	DISC, NUMBERED FA WIRE ADJUSTMENT	40	-
-	-	1	-	-	1	2119957-1	APPLICATOR SHIM PACK	39	-
-	-	1	1	1	1	2119644-1	RAM WASHER, PRECISION	38	-
-	-	1	1	1	1	2119085-1	FA HEAD, ATLANTIC STYLE	37	-
-	-	1	-	-	1	2119092-1	BOLT, ADJUSTMENT	35	-
-	-	8	8	8	8	1-18028-2	WASHER, FLAT, REG M4	33	-
-	-	2	2	2	2	2168083-9	SCR, SKT HD CAP, RoHS, M4 X 20	31	-
-	-	2	2	2	2	1-2168083-0	SCR, SKT HD CAP, RoHS, M4 X 10	29	-
-	-	1	1	1	1	240639-1	STRIPPER (MACHINING)	27	-
-	-	2	2	2	2	1320906-1	STUD, THREADED	25	-
-	-	1	1	1	1	1752371-9	PLATE, STRIP GUIDE	24	-
-	-	2	2	2	2	4-22281-1	SPRING, COMPRESSION	22	-
-	-	1	1	1	1	1752373-1	DRAG	20	-
-	-	2	2	2	2	1901259-3	GUIDE, LOWER STRIP	18	-
-	-	4	4	4	4	1-2079383-1	SCR, BHSC, RoHS (M6 X 12)	17	-
-	-	1	1	1	1	1752360-1	SPACER, HOLD-DOWN	13	-
-	-	1	1	1	1	240833-2	PLATE, REAR SHEAR	11	-
-	-	1	1	1	1	690482-4	PLATE, FRONT SHEAR	9	-
-	-	1	1	1	1	8-1633384-2	ANVIL, COMBINATION	8	-
-	-	1	1	1	1	690474-4	BLADE, SLUG	7	-
-	-	1	1	1	1	240641-8	SPACER	5	-
-	-	1	1	1	1	1-238009-4	BLOCK, FL CRIMPER SPACER	4	-
-	-	1	1	1	1	1-2119582-1	CRIMPER, INSULATION F PREMIUM	3	-
-	-	1	1	1	1	455888-9	SPACER, CRIMPER	2	-
-	-	1	1	1	1	456402-1	CRIMPER, WIRE PREMIUM	1	-

DIMENSIONS:	mm	9 PLC ±0.5	1 PLC ±0.13	5 PLC ±0.013	4 PLC ±0.0001	FINISH	WTG	SCALE	1:1	SHEET 1 OF 4	REV B
MATERIAL:			FINISH:			WTG:	SCALE:	1:1	SHEET 1 OF 4	REV B	

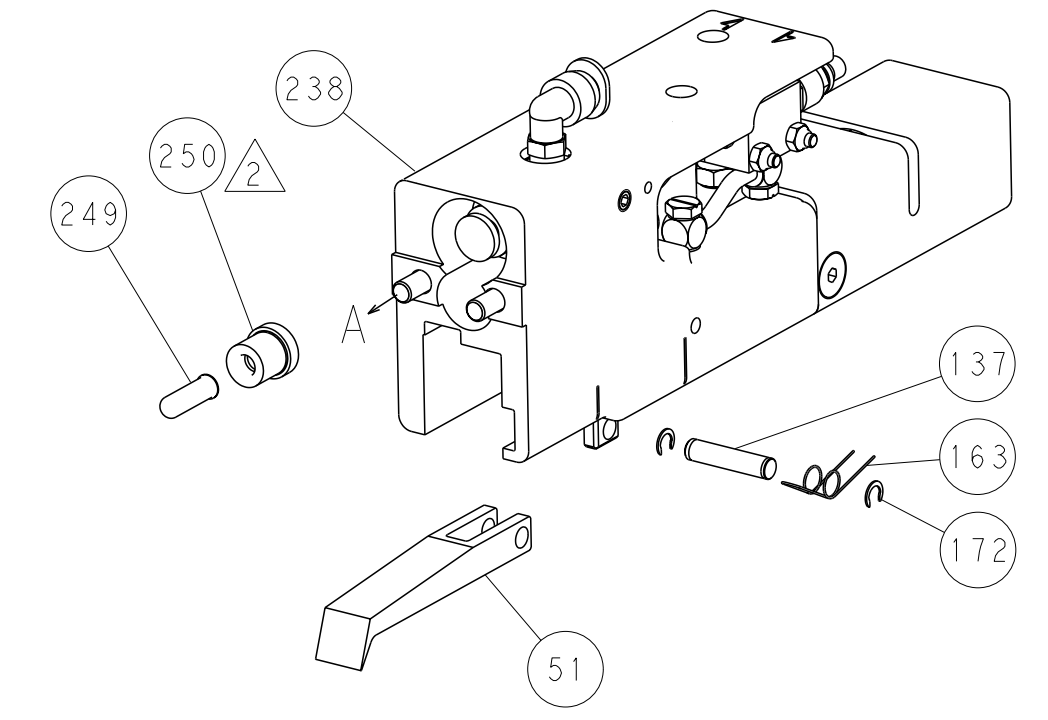
LOC	DIST	REV	DESCRIPTION	DATE	OWN	APVD
A	66		SEE SHEET 1			



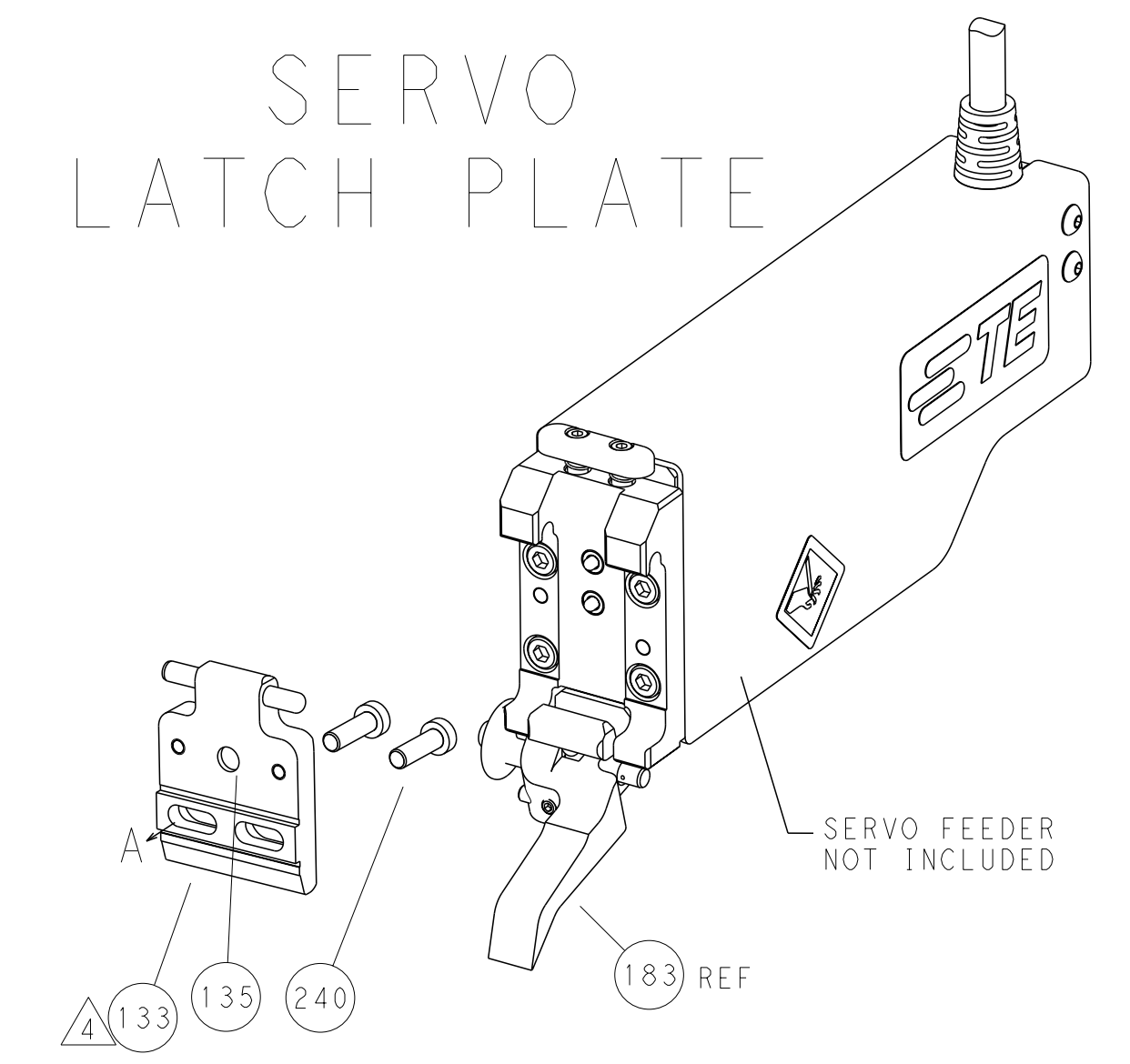
FEED TYPE
MECHANICAL



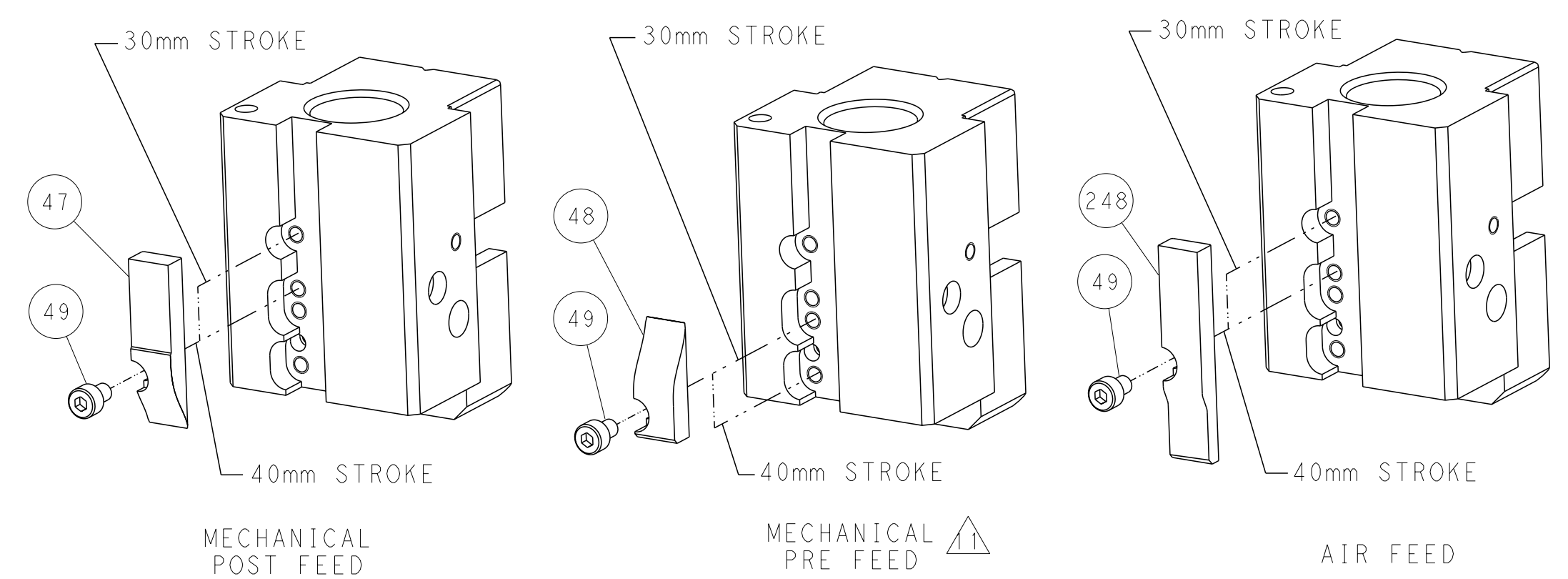
PNEUMATIC



SERVO
LATCH PLATE

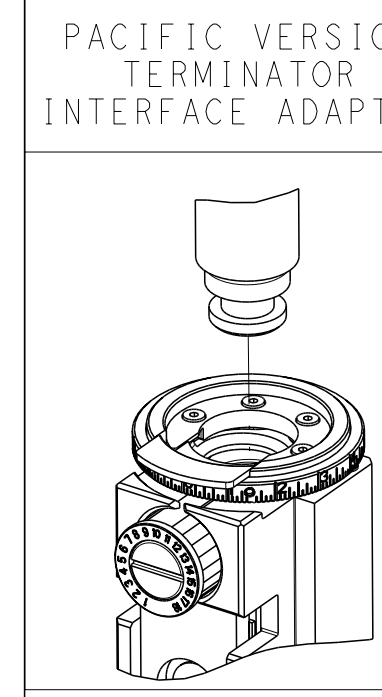


CAM POSITIONS



ATLANTIC VERSION
 Shown on sheets 1 of 4 & 2 of 4
 (Pacific version shown on sheets 3 of 4 & 4 of 4)

DIMENSIONS: mm		TOLERANCES UNLESS OTHERWISE SPECIFIED: 9 PLC ±.5 1 PLC ±0.5 2 PLC ±0.13 3 PLC ±0.013 4 PLC ±0.001 ANGLES ±.1 FINISH		DWN B. WEAVER 22NOV2011 CHK K. STAKEM 22NOV2011 APVD G. BAILEY 22NOV2011		NAME Ocean End Feed Applicator	
MATERIAL:		WEIGHT:		SIZE: CAGE CODE: DRAWING NO: A11 00779 C-2150222		RESTRICTED TO:	
CUSTOMER ACCESSIBLE PRODUCTION DRAWING				SCALE: 1:1		SHEET 2 OF 4 REV B	



APPLICATOR DATA		
CRIMP SIZE		TYPE
WIRE	1.40 mm [.055]	F
INSUL	2.29 mm [.090]	F

APPL INSTRUCTIONS
408-10390

TERMINAL DATA: G.H./LEAR TERMINAL		TE CRIMP SPEC
TERMINAL NAME: RECEPTACLE 3.1 FASTON		
WIRE STRIP LENGTH .213-.223 IN [5.41-5.66 mm]	INSULATION DIAMETER RANGE Ø .080-.100 IN [2.03-2.54 mm]	
TERMINAL APPLICATION SPECIFICATION 114-2025		
TERMINALS APPLIED		
TE TERMINAL 2113211-1	G.H./LEAR TERMINAL 22246.124.186	TE TERMINAL G.H./LEAR TERMINAL

WIRE SIZE	CRIMP HEIGHT mm [INCH]	CRIMP HEIGHT REFERENCE SETTING
0.60mm2	1.14 +/- 0.05 [.045 +/- .002]	5.7
0.50mm2	1.09 +/- 0.05 [.043 +/- .002]	6.3
0.35mm2	1.02 +/- 0.05 [.040 +/- .002]	7.1
0.30mm2	0.99 +/- 0.05 [.039 +/- .002]	7.4



- RECOMMENDED SPARE PARTS
- GREASE BEARING SURFACES LIGHTLY
- 3. LUBRICATE DAILY PER THE APPLICATOR INSTRUCTION SHEET SUPPLIED WITH THE APPLICATOR.
- APPLICATOR SPECIFIC DATA TO BE ENTERED INTO BLANK MEMORY CHIP AT ASSEMBLY. SEE BELOW FOR PART NUMBER:
MECHANICAL FEED WITH "SMART APPLICATOR" CONVERSION: 8-2150222-4
PNEUMATIC FEED WITH "SMART APPLICATOR" CONVERSION: 8-2150222-4
SERVO FEED WITH "FINE CRIMP HEIGHT ADJUST": 8-2150222-5
- 5. ADJUSTMENT OF THE STRIPPER MAY BE REQUIRED WHEN MOVING THE APPLICATOR BETWEEN BENCH AND LEADMAKER APPLICATIONS.
- APPLY PART NUMBER 1-23419-5 LOCTITE TO THREADS OF ITEM 50.
- GREASE THREADS, GROOVE AND O-RING ON ITEMS 139 & 153.
- MAGNET, ITEM 166 MUST BE ORIENTED CORRECTLY IN ORDER TO PROPERLY ACTUATE THE COUNTER.
- CRIMP HEIGHT REFERENCE SETTING WAS THE SETTING USED WHEN THE APPLICATOR WAS QUALIFIED AT THE FACTORY. ADJUSTMENT MAY BE NECESSARY WHEN RUNNING APPLICATOR IN THE FIELD.
- SPARE FEED CAM STORAGE LOCATION REFER TO INSTRUCTION SHEET FOR ADDITIONAL INFORMATION.
- THE RECOMMENDED SET-UP FOR END FEED APPLICATORS IS POST-FEED WITH ITEM 2119653-1. THE APPLICATOR CAN BE CONFIGURED FOR PRE-FEED WITH ITEM 2119652-1 BUT MAY ENCOUNTER PROBLEMS WITH SOME APPLICATIONS. FEED ISSUES OR TERMINAL JAMMING MAY OCCUR IN THE PRE-FEED CONFIGURATION.

*WARNING
ON INSTALLATION, SET WIRE DISC, ITEM 40 TO LARGEST WIRE SIZE SETTING. USE OF SETTINGS BELOW MINIMUM REQUIRED CRIMP HEIGHT SETTING WILL CAUSE DAMAGE TO CRIMP TOOLING.

-77-27-25-22-21	PART NO	DESCRIPTION	ITEM NO
- 1 1 1 1 1	2119782-1	FINE ADJUST HEAD ASM, PACIFIC STYLE	251
- - - 1 -	2119640-1	PUSH ROD, AIR FEED	250

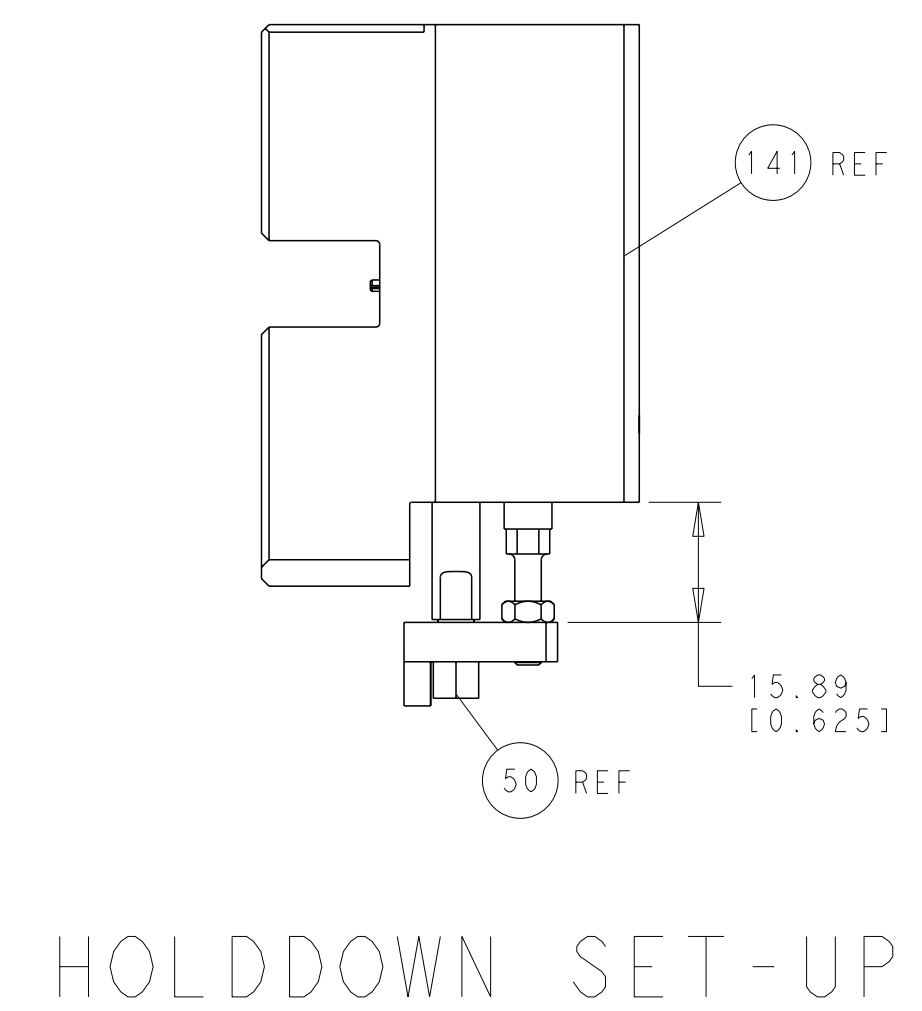
PACIFIC VERSION
Shown on sheets 3 of 4 & 4 of 4
(Atlantic version shown on sheets 1 of 4 & 2 of 4)

SET UP GAUGE	LOC	DIST	REVISIONS					
2119599-2	A	66	P	LTR	DESCRIPTION	DATE	DWN	APVD
			-	-	SEE SHEET 1	-	-	-

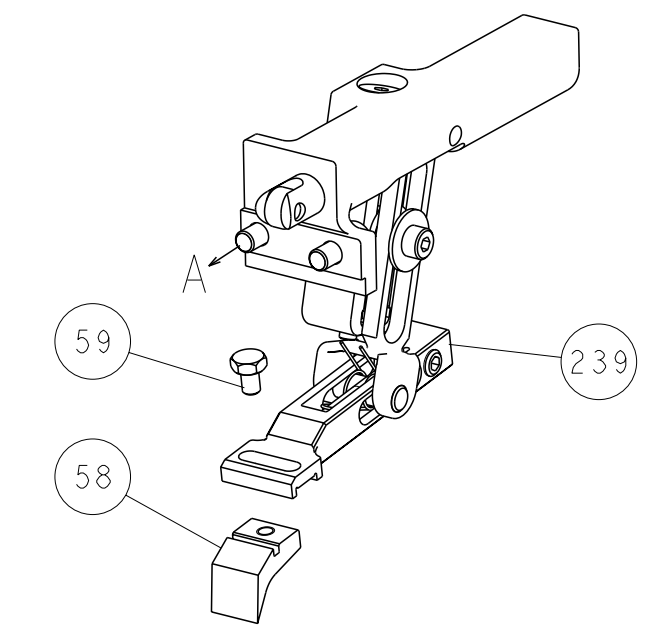
		P	LTR	DESCRIPTION	DATE	DWN	APVD		
-	-	-	1	-	2079988-1			BUSHING, LCH5-12, MISUMI	249
-	1	1	1	1	1-22279-3			SPRING, COMPRESSION	246
-	1	1	1	1	2119082-9			CAM, SNAIL, INSULATION ADJUSTMENT	244
-	1	1	1	1	2079764-1			WASHER, WAVE SPRING, CREST-TO-CREST	243
-	1	1	1	1	2119083-1			RETAINER, INSULATION DIAL	242
-	-	-	2	-	2168400-7			SHCS, LOW HEAD, RoHS, M5 X 10	240
-	-	-	-	1	2119580-1			MECHANICAL FEED ASSEMBLY	239
-	-	-	-	1	2063440-1			AIR FEED MODULE	238
-	-	1	-	-	2119740-2			TAG, IDENTIFICATION	213
-	4	4	4	4	2079383-9			SCR, BHSC, RoHS (M6 X 20)	186
-	-	REF	-	-	1901697-1			FEED FINGER ASSEMBLY, EF	183
-	1	1	1	1	6-993111-6			PIN, SLOTTED SPRING 3.0 X 14.0	177
-	1	1	1	1	8-22280-7			SPRING, COMPRESSION	176
-	1	1	1	1	1752353-2			GUIDE PIN, HOLDDOWN	175
-	1	1	1	1	1901680-2			GUIDE PIN, HOLDDOWN	174
-	-	-	-	2	21045-3			RING, RETAIN, EXTERN, 3/16 CRESCENT	172
-	1	1	1	1	994969-1			MAGNET, RARE EARTH HIGH ENERGY	166
-	REF	REF	REF	REF	994970-2			COUNTER, MAGNETIC	164
-	-	-	1	-	240638-1			SPRING, FEED FINGER	163
-	1	1	1	1	8-21084-1			O-RING, .801 ID, .070 DIA. MAT.	153
-	-	-	-	1	2119641-2			FEED CAM, AIR FEED	152
-	1	1	1	1	2119798-2			DETENT PIN	145
-	1	1	1	1	2079383-8			SCR, BHSC, RoHS (M4 X 16)	144
-	-	-	-	1	2119653-2			FEED CAM, POST FEED	142
-	1	1	1	1	2119655-6			APPLICATOR BASIC ASSEMBLY, EF	141
-	1	1	1	1	2119651-1			RAM, ASIAN STYLE, END FEED	140
-	1	1	1	1	2119092-2			BOLT, ADJUSTMENT	139
-	-	-	-	1	3-23627-7			PIN, RETAIN, GRVD, 3/16 X .854	137
-	-	REF	-	-	SEE NOTE 4			MEMORY CHIP, PROGRAMMED	135
-	-	1	-	-	1633743-1			SERVO FEED LATCH ASM	133
-	1	1	1	1	455888-3			SPACER, CRIMPER	82
-	1	1	1	1	2119956-2			DOCUMENTATION PACKAGE	71
-	2	2	2	2	2-18032-2			SCR, SET, FLT POINT M3 X 10.0	70
-	1	-	-	1	2119740-1			TAG, IDENTIFICATION	67
-	2	2	2	2	2168078-1			SCREW, DRIVE, RH, RoHS	66
-	1	1	1	1	1901681-5			HOLDDOWN, TERMINAL	65
-	1	1	1	1	2119793-1			LIMITER, ADJUSTMENT BOLT	63
-	3	3	3	3	992763-5			SCR, SET, SOC, CONE POINT, M3 X 4.0	62
-	-	-	-	-	5-18022-5			SCR, HEX HD CAP, M4 X 6.0	59
-	-	-	-	-	2063961-1			FEED FINGER	58
-	4	4	4	4	2168400-4			SHCS, LOW HEAD, RoHS, M4 X 8	57
-	2	2	2	2	2168083-2			SCR, SKT HD CAP, RoHS, M4 X 8.0	56
-	2	2	2	2	5018030-2			NUT, HEX, REG, RoHS, M4	55
-	2	2	2	2	5018030-1			NUT, HEX, REG, RoHS, M3	54
-	2	2	2	2	986965-8			NUT, LOCK, HEX, TORQUE (M4)	53
-	1	1	1	1	1-5018030-0			NUT, HEX, REG, RoHS, M3.5	52
-	-	-	-	-	2119792-1			PAWL, EF, AIR	51
-	1	1	1	1	1752354-4			STANDOFF, HOLD-DOWN	50
-	-	-	-	1	2	18023-9		SCR, SKT HD CAP M4 X 6.0	49
-	-	-	-	-	1	2119652-1		FEED CAM, PRE FEED	48
-	1	1	1	1	2079383-7			SCR, BHSC, RoHS (M8 X 25)	41
-	1	1	1	1	2119645-1			DISC, NUMBERED FA WIRE ADJUSTMENT	40
-	1	1	1	1	2119957-1			APPLICATOR SHIM PACK	39
-	1	1	1	1	2119644-1			RAM WASHER, PRECISION	38
-	8	8	8	8	1-18028-2			WASHER, FLAT, REG M4	33
-	2	2	2	2	2168083-9			SCR, SKT HD CAP, RoHS, M4 X 20	31
-	2	2	2	2	1-2168083-0			SCR, SKT HD CAP, RoHS, M4 X 10	29
-	1	1	1	1	240639-1			STRIPPER (MACHINING)	27
-	2	2	2	2	1320906-1			STUD, THREADED	25
-	1	1	1	1	1752371-9			PLATE, STRIP GUIDE	24
-	2	2	2	2	4-22281-1			SPRING, COMPRESSION	22
-	1	1	1	1	1752373-1			DRAW	20
-	2	2	2	2	1901259-3			GUIDE, LOWER STRIP	18
-	1	1	1	1	1752360-1			SPACER, HOLD-DOWN	13
-	1	1	1	1	240833-2			PLATE, REAR SHEAR	11
-	1	1	1	1	690482-4			PLATE, FRONT SHEAR	9
1	1	1	1	1	8-1633384-2			ANVIL, COMBINATION	8
-	1	1	1	1	690474-4			BLADE, SLUG	7
-	1	1	1	1	240641-8			SPACER	5
-	1	1	1	1	1-238009-4			BLOCK, FL CRIMPER SPACER	4
1	1	1	1	1	1-2119582-1			CRIMPER, INSULATION F PREMIUM	3
-	1	1	1	1	455888-9			SPACER, CRIMPER	2
1	1	1	1	1	456402-1			CRIMPER, WIRE PREMIUM	1

DIMENSIONS:	TOLERANCES UNLESS OTHERWISE SPECIFIED:	DATE	BY	CHKD BY	APVD BY
mm	9 PLC ±0.5 1 PLC ±0.13 5 PLC ±0.013 4 PLC ±0.001 ANGLES ±0.010	22NOV2011	WEAVER	WEAVER	WEAVER
		22NOV2011	STAKEM	STAKEM	STAKEM
		22NOV2011	RAILEY	RAILEY	RAILEY
MATERIAL:	FINISH:	NAME: Ocean End Feed Applicator			
		SIZE: A1		CAGE CODE: 00779	DRAWING NO: C-2150222
CUSTOMER ACCESSIBLE PRODUCTION DRAWING		SCALE: 1:1	SHEET: 3 OF 4	REV: B	

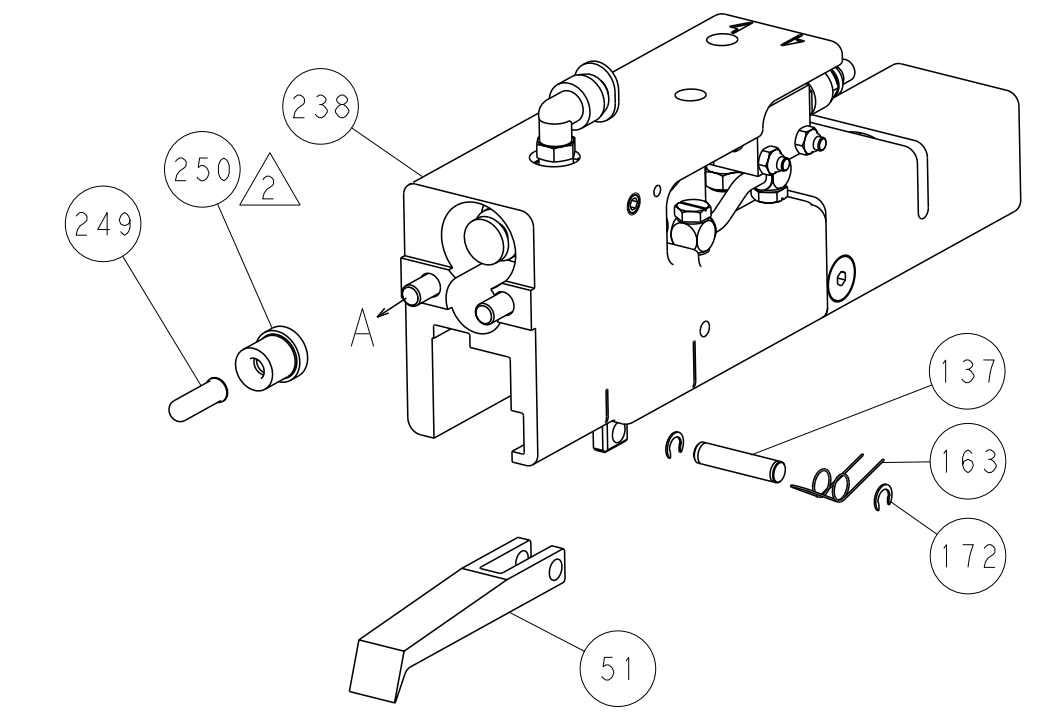
LOC	DIST	REV	DESCRIPTION	DATE	OWN	APVD
A	66		SEE SHEET 1			



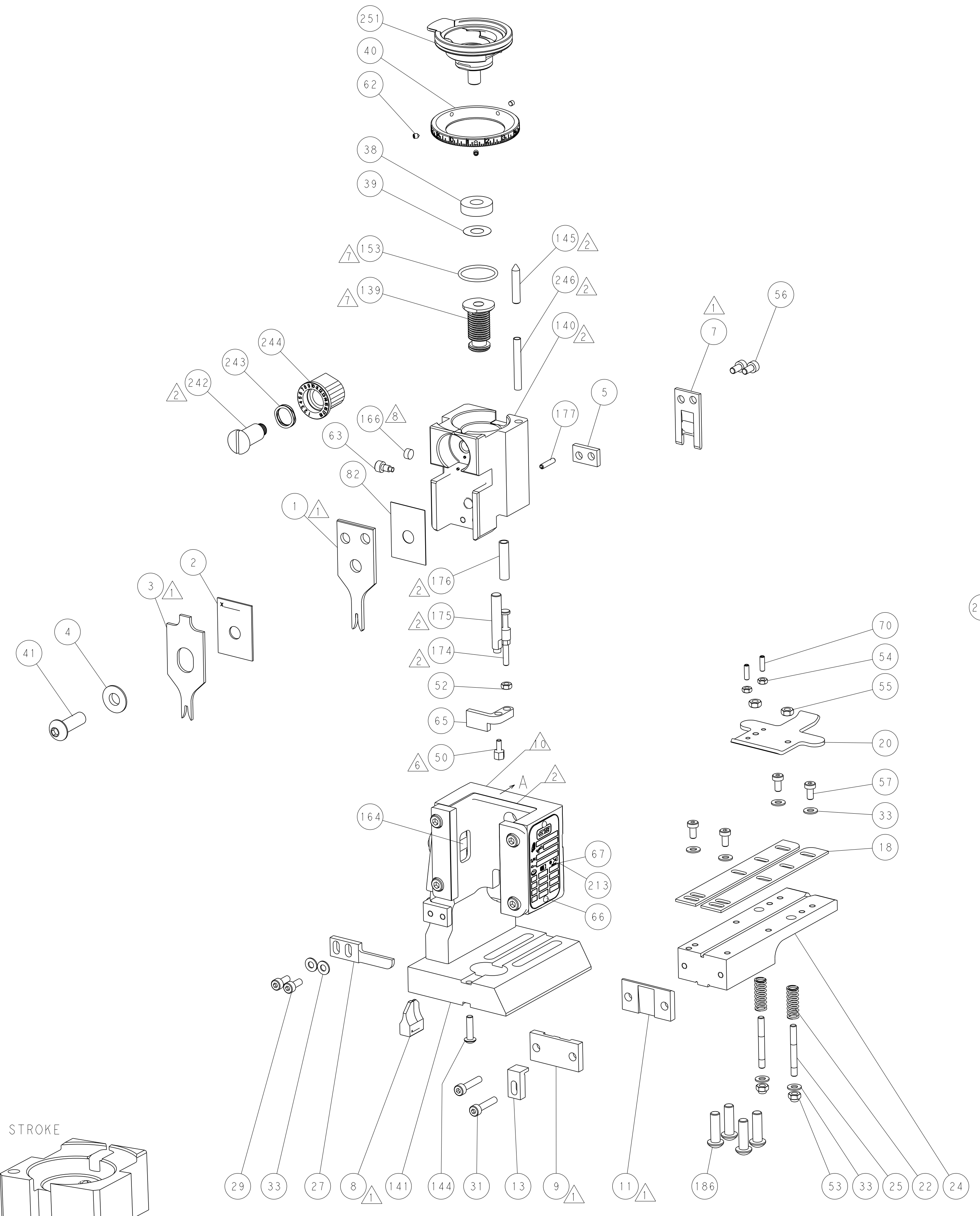
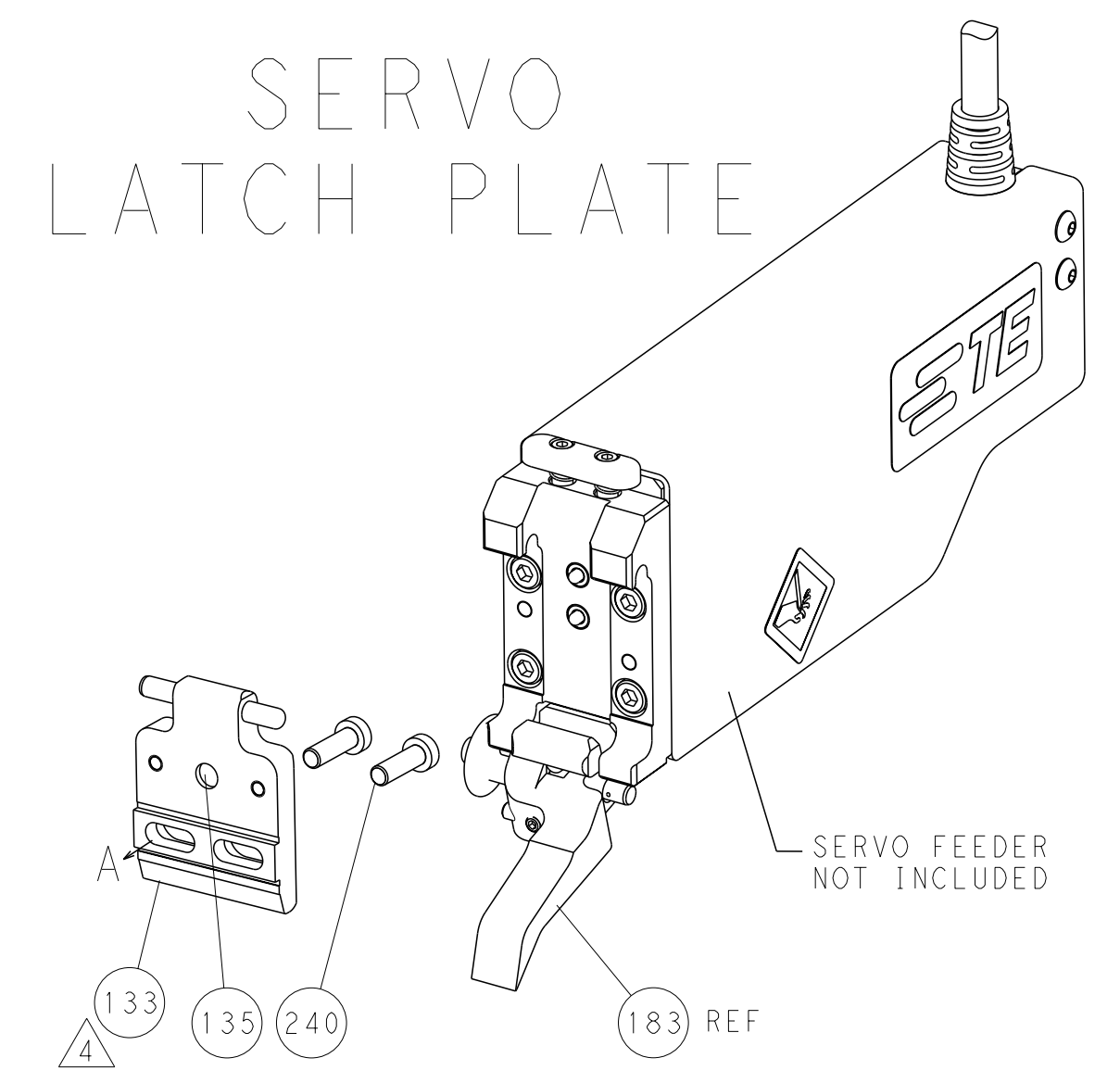
FEED TYPE
MECHANICAL



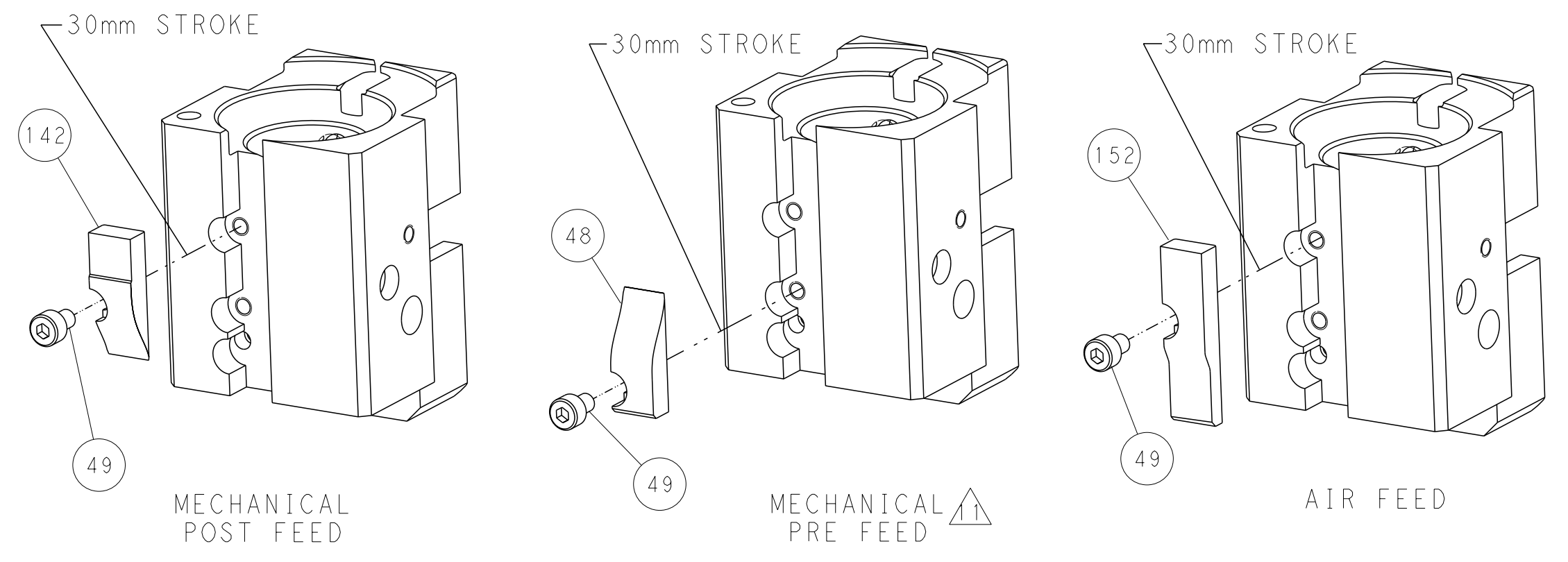
PNEUMATIC



SERVO LATCH PLATE



CAM POSITIONS



PACIFIC VERSION
 Shown on sheets 3 of 4 & 4 of 4
 (Atlantic version shown on sheets 1 of 4 & 2 of 4)

<small>THIS DRAWING IS A CONTROLLED TECHNOLOGY INFORMATION DOCUMENT. IT IS THE PROPERTY OF TYCO ELECTRONICS CORPORATION. IT IS TO BE KEPT IN CONFIDENTIALITY AND NOT TO BE REPRODUCED OR DISCLOSED TO OTHERS WITHOUT THE WRITTEN PERMISSION OF TYCO ELECTRONICS CORPORATION. THIS DRAWING IS UNPUBLISHED. RELEASED FOR PUBLICATION 2011. COPYRIGHT 2011 BY TYCO ELECTRONICS CORPORATION, ALL RIGHTS RESERVED.</small>		DWN: B. WEAVER 22NOV2011 CHK: K. STAKEM 22NOV2011 APVD: G. BAILEY 22NOV2011	NAME: TE Connectivity Harrisburg, PA 17105-3608
DIMENSIONS: mm TOLERANCES UNLESS OTHERWISE SPECIFIED: 9 PLC ±.5 1 PLC ±0.13 5 PLC ±0.13 4 PLC ±0.001 ANGLES ±.1 FINISH:		PRODUCT SPEC: APPLICATION SPEC: WEIGHT: CUSTOMER ACCESSIBLE PRODUCTION DRAWING	SIZE: CAGE CODE DRAWING NO. RESTRICTED TO: A11 00779 C=2150222 SCALE: 1:1 SHEET 4 OF 4 REV B