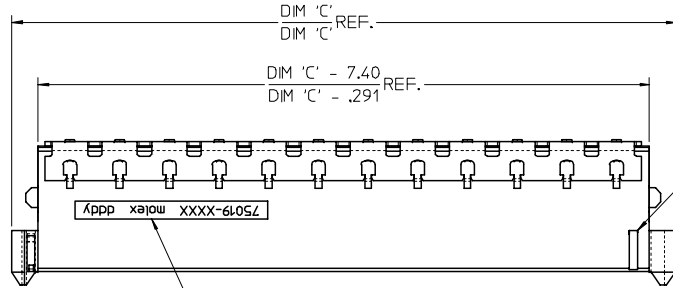
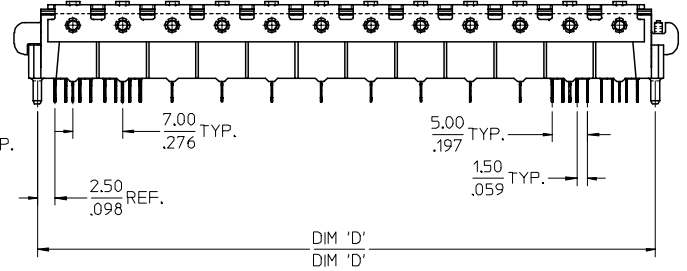
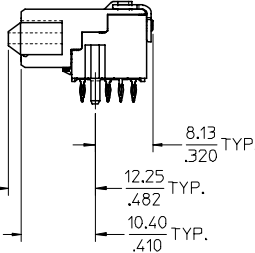
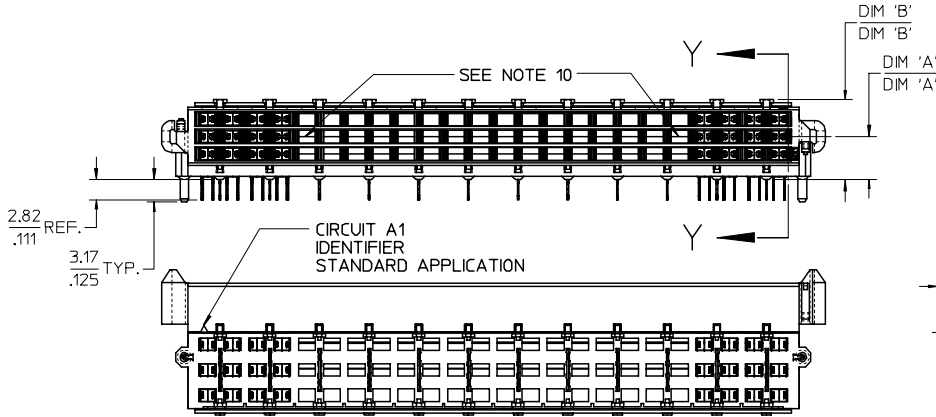


- NOTES:
- 1) MATERIALS:
HOUSING - LIQUID CRYSTAL POLYMER, UL94 V-0
WAFER DIELECTRIC - LIQUID CRYSTAL POLYMER, UL94 V-0
CONTACT - COPPER ALLOY
 - 2) FINISHES
CONTACT INTERFACE
0.76 MICROMETER MINIMUM SELECT GOLD OVER
1.27 MICROMETER MINIMUM NICKEL OVERALL
COMPLIANT INTERFACE
0.76 MICROMETER MINIMUM SELECT TIN-LEAD OVER
1.27 MICROMETER MINIMUM NICKEL OVERALL
HOUSING
0.10 MICROMETER MAXIMUM IMMERSION GOLD OVER
3.81 MICROMETER MINIMUM NICKEL OVER
3.81 MICROMETER MINIMUM COPPER OVERALL
 - 3) PRODUCT SPECIFICATION
THIS PART CONFORMS TO MOLEX SPECIFICATION PS-75018-001.
 - 4) PACKAGING SPECIFICATION
THIS PART TO BE PACKAGED PER SPECIFICATION PK-75020-010.
 - 5) APPLICATION SPECIFICATION
THIS PART TO BE APPLIED PER SPECIFICATION AS-75018-001.
APPLICATION TOOL AND INSTRUCTIONS PER AS-75018-001.
 - 6) MATING INFORMATION
THIS PART MATES WITH 75018-XXXX & 75140-XXXX.
WILL MATE WITH MAXIMUM OF 1.27mm MIS-ALIGNMENT
WILL MATE WITH MAXIMUM 0.5° MIS-ALIGNMENT
 - 7) ORIENTATION
THIS PART CAN BE USED IN A STANDARD OR INVERTED ORIENTATION (I.E. ROTATED 180°)
 - 8) SEE SHEET 3 FOR PCB LAYOUT INFORMATION
 - 9) SEE SHEET 4 FOR CIRCUIT DESIGNATION
 - 10) CIRCUITS IN THIS ZONE HAVE BEEN OMITTED TO SIMPLIFY THE MODEL. ACTUAL PRODUCT IS FULLY LOADED WITH TERMINALS
 - 11) APPLICATION TOOLING KEEP OUT AREA.
NO COMPONENTS ALLOWED IN THIS AREA.
 - 12) CONFORMS TO MOLEX COSMETIC SPECIFICATION PS-75005-001.
 - 13) MARKING: PART NUMBER, MOLEX LOGO, DATE CODE
 - 14) RECOMMENDED DRILL SIZE 0.66±0.03 TO YIELD FINISHED PLATED THROUGH HOLE 0.55±0.05



CIRCUIT A1 IDENTIFIER INVERTED APPLICATION

MARKING SEE NOTE 13



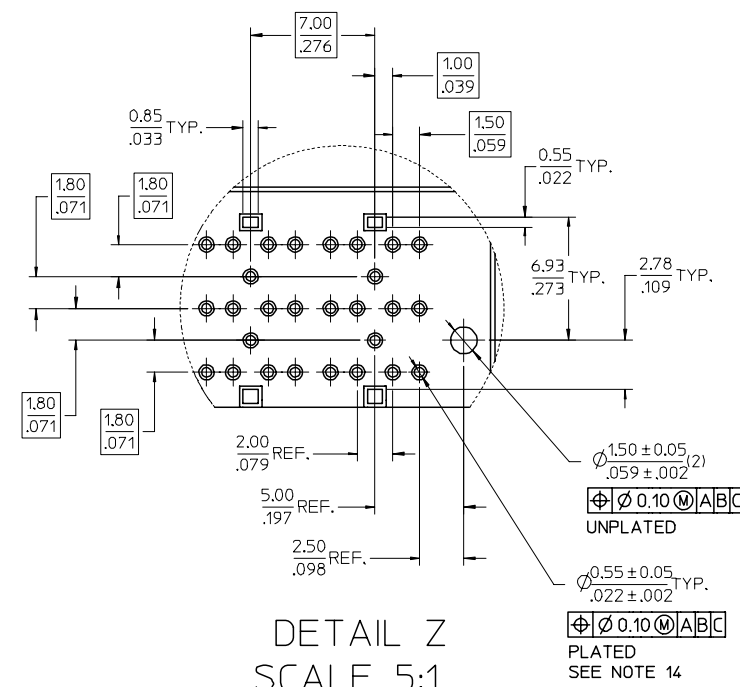
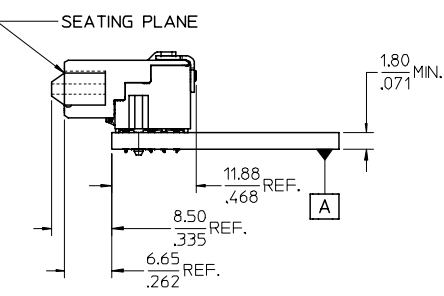
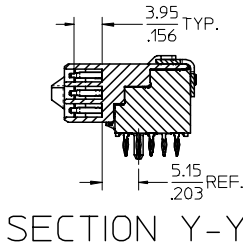
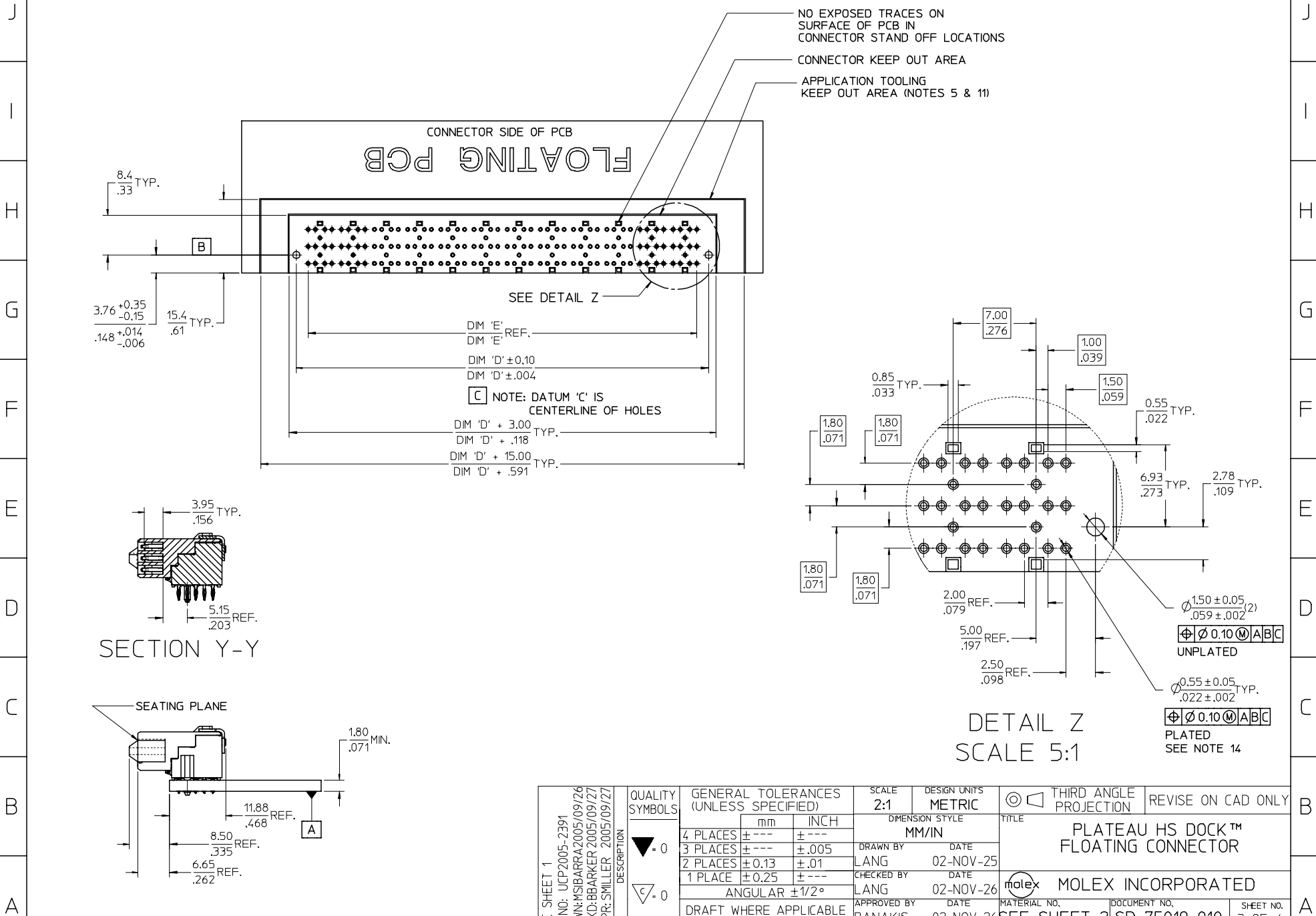
REMOVED VOID CORES EC NO: UCP2005-2391 DRAWN: MSBARRA 2005/09/26 CHKD: BBARKER 2005/09/27 APPR: SMILLER 2005/09/27	QUALITY SYMBOLS ▽=0 ◊=0	GENERAL TOLERANCES (UNLESS SPECIFIED)		SCALE 2:1	DESIGN UNITS METRIC	THIRD ANGLE PROJECTION	REVISE ON CAD ONLY		
			m/m	INCH	DIMENSION STYLE MM/IN		TITLE		
		4 PLACES ± --- ± ---	3 PLACES ± --- ± .005	2 PLACES ± 0.13 ± .01	1 PLACE ± 0.25 ± ---	DRAWN BY LANG	DATE 02-NOV-25	PLATEAU HS DOCK™ FLOATING CONNECTOR	
		ANGULAR ±1/2°				CHECKED BY LANG	DATE 02-NOV-26	MOLEX INCORPORATED	
	DRAFT WHERE APPLICABLE MUST REMAIN WITHIN DIMENSIONS		APPROVED BY BANAKIS		DATE 02-NOV-26	MATERIAL NO. SEE SHEET 2	DOCUMENT NO. SD-75019-010		
			THIS DRAWING CONTAINS INFORMATION THAT IS PROPRIETARY TO MOLEX INCORPORATED AND SHOULD NOT BE USED WITHOUT WRITTEN PERMISSION		SHEET NO. 1 OF 4				

J
I
H
G
F
E
D
C
B
A

J
I
H
G
F
E
D
C
B
A

ITEM NUMBER	CIRCUIT SIZE	NO. OF COLUMNS 'N'	CENTERLINE DIMENSION 'A' mm(in)	O/A HEIGHT DIMENSION 'B' mm(in)	O/A LENGTH DIMENSION 'C' mm(in)	PEG TO PEG DIMENSION 'D' mm(in)	FIRST-LAST DIMENSION 'E' mm(in)
75019-0015	144	48	4.74 (.187)	9.98 (.393)	93.50 (3.681)	87.00 (3.425)	82.00 (3.228)
75019-0016	144	48	6.09 (.240)	11.33 (.446)	93.50 (3.681)	87.00 (3.425)	82.00 (3.228)
NOT TOOLED	132	44	4.74 (.187)	9.98 (.393)	86.50 (3.406)	80.00 (3.150)	75.00 (2.953)
75019-0014	120	40	4.74 (.187)	9.98 (.393)	79.50 (3.130)	73.00 (2.874)	68.00 (2.677)
75019-0013	108	36	4.74 (.187)	9.98 (.393)	72.50 (2.854)	66.00 (2.598)	61.00 (2.402)
NOT TOOLED	96	32	4.74 (.187)	9.98 (.393)	65.50 (2.579)	59.00 (2.323)	54.00 (2.126)
NOT TOOLED	84	28	4.74 (.187)	9.98 (.393)	58.50 (2.303)	52.00 (2.047)	47.00 (1.850)
NOT TOOLED	72	24	4.74 (.187)	9.98 (.393)	51.50 (2.028)	45.00 (1.772)	40.00 (1.575)
NOT TOOLED	60	20	4.74 (.187)	9.98 (.393)	44.50 (1.752)	38.00 (1.496)	33.00 (1.299)
NOT TOOLED	48	16	4.74 (.187)	9.98 (.393)	37.50 (1.476)	31.00 (1.220)	26.00 (1.024)
NOT TOOLED	36	12	4.74 (.187)	9.98 (.393)	30.50 (1.201)	24.00 (.945)	19.00 (.748)
75019-0017	108	36	6.09 (.240)	11.33 (.446)	72.50 (2.854)	66.00 (2.598)	61.00 (2.402)
75019-0018	120	40	4.74 (.187)	9.98 (.393)	79.50 (3.130)	73.00 (2.874)	68.00 (2.677)

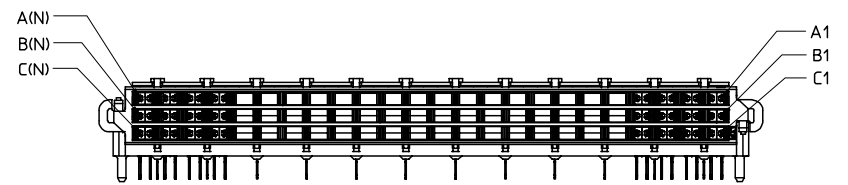
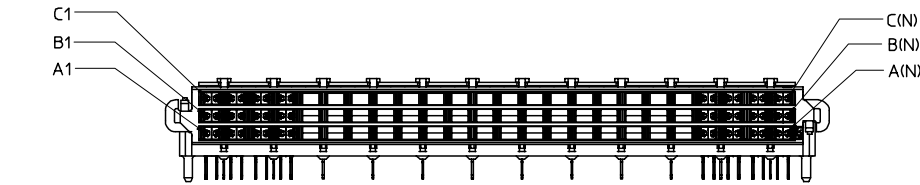
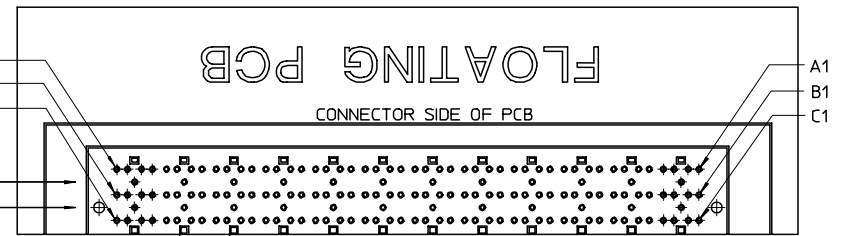
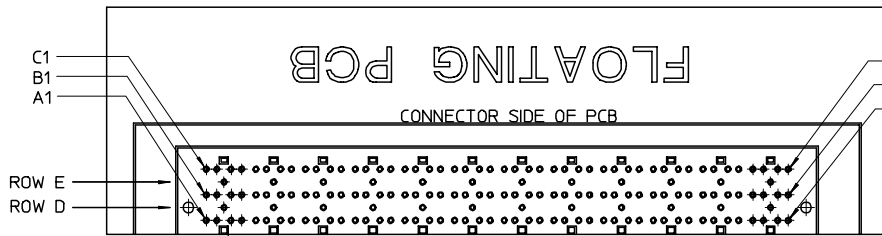
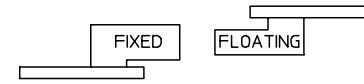
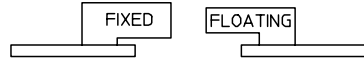
SEE SHEET 1 EC NO: UCP2005-2391 DRWN: MSIBARRA 2005/09/26 CHKD: BRARKER 2005/09/27 APPR: SMILLER 2005/09/27	DESCRIPTION REV	QUALITY SYMBOLS	GENERAL TOLERANCES (UNLESS SPECIFIED)	SCALE 1:1	DESIGN UNITS METRIC	THIRD ANGLE PROJECTION	REVISE ON CAD ONLY
		▽ = 0 ▽ = 0	mm INCH 4 PLACES ± --- ± --- 3 PLACES ± --- ± .005 2 PLACES ± 0.13 ± .01 1 PLACE ± 0.25 ± --- ANGULAR ±1/2°	DIMENSION STYLE		TITLE	
				MM/IN		PLATEAU HS DOCK™ FLOATING CONNECTOR	
				DRAWN BY DATE LANG 02-NOV-25		CHECKED BY DATE LANG 02-NOV-26	
DRAFT WHERE APPLICABLE MUST REMAIN WITHIN DIMENSIONS		APPROVED BY DATE BANAKIS 02-NOV-26		MATERIAL NO. DOCUMENT NO. SEE CHART SD-75019-010		SHEET NO. 2 OF 4	
THIS DRAWING CONTAINS INFORMATION THAT IS PROPRIETARY TO MOLEX INCORPORATED AND SHOULD NOT BE USED WITHOUT WRITTEN PERMISSION							



SEE SHEET 1	EC NO: UCP2005-2391 DRAWN: MSIBARRA 2005/09/26 CHKD: BBARKER 2005/09/27 APPR: SMILLER 2005/09/27	QUALITY SYMBOLS ▽ = 0 ◻ = 0	GENERAL TOLERANCES (UNLESS SPECIFIED)		SCALE 2:1	DESIGN UNITS METRIC	THIRD ANGLE PROJECTION	REVISE ON CAD ONLY
			mm	INCH	DIMENSION STYLE MM/IN		TITLE	
			4 PLACES ± --- ± ---		DRAWN BY LANG	DATE 02-NOV-25	PLATEAU HS DOCK™ FLOATING CONNECTOR	
			3 PLACES ± --- ± .005		CHECKED BY LANG	DATE 02-NOV-26	MOLEX INCORPORATED	
			2 PLACES ± 0.13 ± .01		APPROVED BY BANAKIS	DATE 02-NOV-26	MATERIAL NO. SEE SHEET 2	DOCUMENT NO. SD-75019-010
			1 PLACE ± 0.25 ± ---		THIS DRAWING CONTAINS INFORMATION THAT IS PROPRIETARY TO MOLEX INCORPORATED AND SHOULD NOT BE USED WITHOUT WRITTEN PERMISSION		SHEET NO. 3 OF 4	
			ANGULAR ±1/2°		DRAFT WHERE APPLICABLE MUST REMAIN WITHIN DIMENSIONS			

STANDARD APPLICATION CIRCUIT DESIGNATIONS

INVERTED APPLICATION CIRCUIT DESIGNATIONS



CIRCUIT DESIGNATION

FIRST MATE: HOUSING - SIGNAL GROUND
 SECOND MATE: A1, C1, A(N), C(N) (FOR POWER RETURN)
 THIRD MATE: A2, B2, C2, A(N-1), B(N-1), C(N-1) & ALL OTHERS
 (A2, C2, A(N-1) & C(N-1) FOR POWER)
 (ALL OTHERS FOR SIGNAL)
 LAST MATE: B1, B(N) (FOR CARD DETECT)

ALL COLUMNS FROM 3 THROUGH (N-2) ARE SUITABLE FOR DIFFERENTIAL PAIRS
 EG: A3-A4, B3-B4, C3-C4, A(N-2)-A(N-3), B(N-2)-B(N-3)

SIGNAL GROUND: ROWS D & E

SEE SHEET 1	EC NO: UCP2005-2391 DRWN:MSIBARRA2005/09/26 CHKD:BBARKER 2005/09/27 APPR:SMILLER 2005/09/27	QUALITY SYMBOLS ▽=0 ◊=0	GENERAL TOLERANCES (UNLESS SPECIFIED)		SCALE 2:1	DESIGN UNITS METRIC	THIRD ANGLE PROJECTION	REVISE ON CAD ONLY			
				m/m	INCH	DIMENSION STYLE MM/IN		TITLE			
			4 PLACES ± --- ± ---	3 PLACES ± --- ± .005	2 PLACES ± 0.13 ± .01	1 PLACE ± 0.25 ± ---	DRAWN BY LANG	DATE 02-NOV-25	PLATEAU HS DOCK™ FLOATING CONNECTOR		
			ANGULAR ±1/2°		DRAFT WHERE APPLICABLE		CHECKED BY LANG	DATE 02-NOV-26	MOLEX INCORPORATED		
MUST REMAIN WITHIN DIMENSIONS		APPROVED BY BANAKIS		DATE 02-NOV-26	MATERIAL NO. SEE SHEET 2		DOCUMENT NO. SD-75019-010	SHEET NO. 4 OF 4			
THIS DRAWING CONTAINS INFORMATION THAT IS PROPRIETARY TO MOLEX INCORPORATED AND SHOULD NOT BE USED WITHOUT WRITTEN PERMISSION											