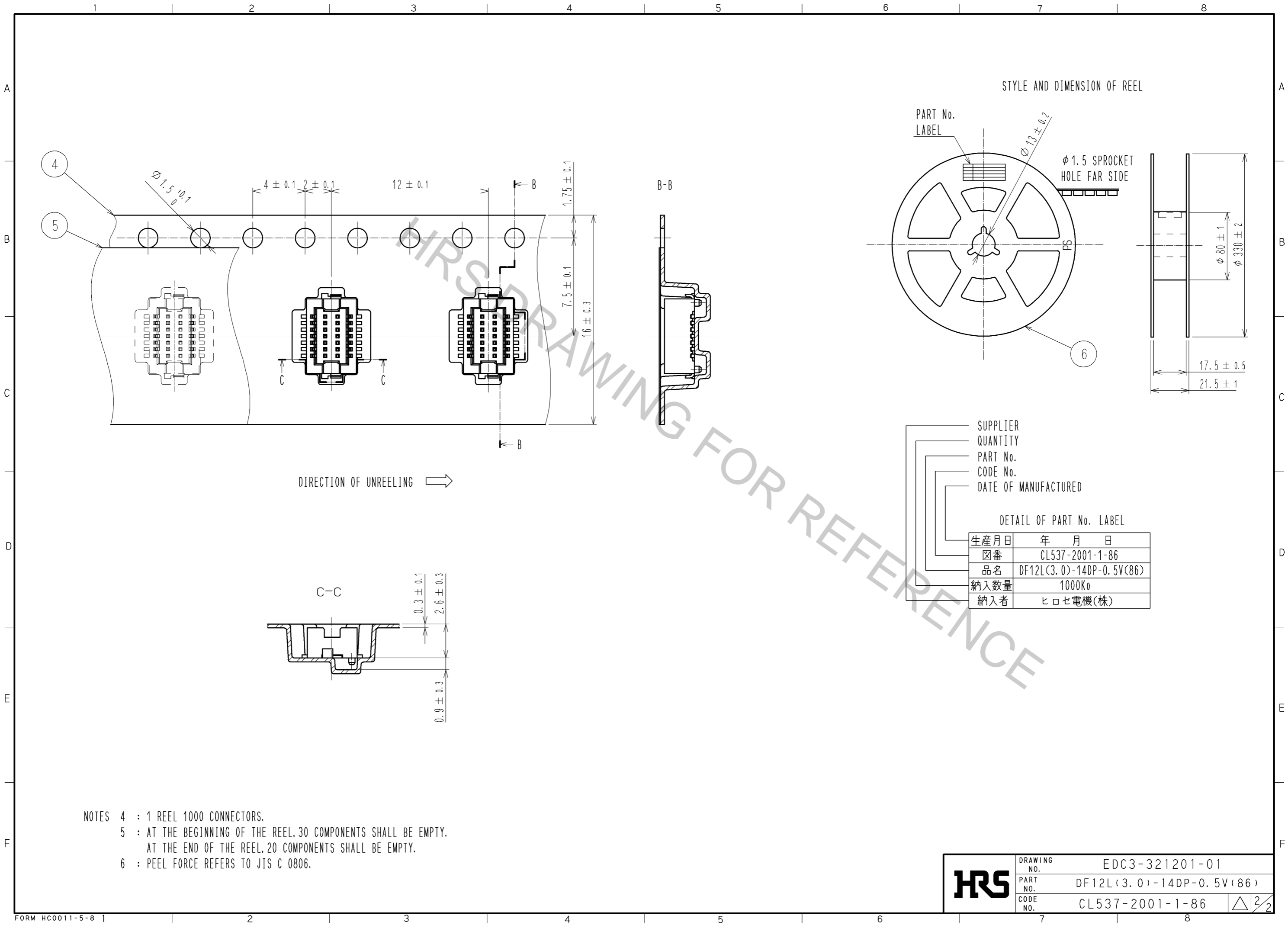


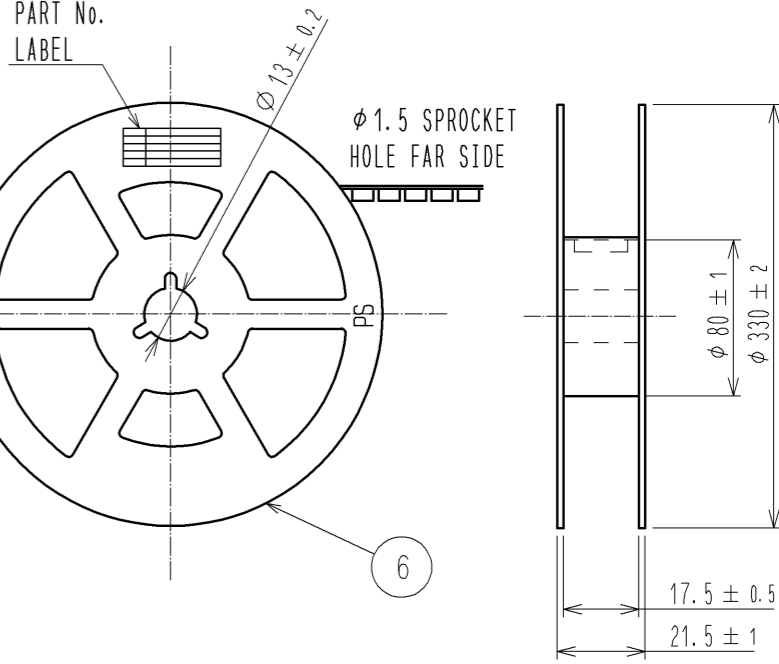
NO.	MATERIAL	FINISH	REMARKS	NO.	MATERIAL	FINISH	REMARKS
2	PHOSPHOR BRONZE		CONTACT AREA:GOLD PLATED 0.2μm min LEAD AREA:GOLD PLATED 0.015μm min OTHERS(UNDER PLATING):NICKEL PLATED 2μm min	6	PS		BLACK(PLASTIC REEL)
1	LCP		UL94V-0, BLACK	5	POLYESTER		CLEAR(COVER TAPE)
				4	PS		CLEAR(EMBOSSED CARRIER TAPE)
				3	BRASS		TIN PLATED 2μm min (UNDER PLATING):NICKEL 1μm min

UNITS	SCALE	COUNT	DESCRIPTION OF REVISIONS	DESIGNED	CHECKED	DATE
mm	10:1	△				
APPROVED : KH. IKEDA			08.11.07	DRAWING NO. EDC3-321201-01		
CHECKED : TS. MIYAZAKI			08.11.07	PART NO. DF12L(3.0)-14DP-0.5V(86)		
DESIGNED : TY. YAMASAKI			08.11.06	CODE NO. CL537-2001-1-86		
DRAWN : TY. YAMASAKI			08.11.06	1/2		



STYLE AND DIMENSION OF REEL



SUPPLIER  
 QUANTITY  
 PART No.  
 CODE No.  
 DATE OF MANUFACTURED

DETAIL OF PART No. LABEL

生産月日	年 月 日
図番	CL537-2001-1-86
品名	DF12L(3.0)-14DP-0.5V(86)
納入数量	1000ko
納入者	ヒロセ電機(株)

- NOTES
- 4 : 1 REEL 1000 CONNECTORS.
  - 5 : AT THE BEGINNING OF THE REEL, 30 COMPONENTS SHALL BE EMPTY.  
AT THE END OF THE REEL, 20 COMPONENTS SHALL BE EMPTY.
  - 6 : PEEL FORCE REFERS TO JIS C 0806.

<b>HRS</b>	DRAWING NO.	EDC3-321201-01
	PART NO.	DF12L(3.0)-14DP-0.5V(86)
	CODE NO.	CL537-2001-1-86
		△ 2/2