

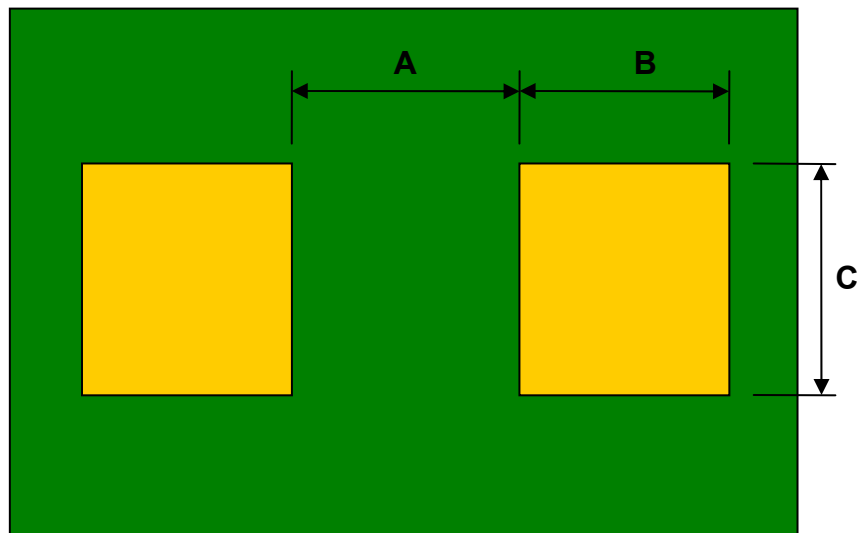
## Discrete to 300mil TH Adapters – SM/TH pins

**Ordering notes:**

- -10X part number ending indicates quantity 10 pack
- Pins are included unassembled

Part Numbers	DIMENSIONS					
	mm			inches		
	A	B	C	A	B	C
<b>DC0402S</b> / DC0402T	<b>0.25</b>	<b>0.65</b>	<b>0.65</b>	<b>0.010</b>	<b>0.026</b>	<b>0.026</b>
DC0603S / DC0603T	0.70	0.90	1.00	0.028	0.035	0.039
DC0805S / DC0805T	1.05	0.95	1.40	0.041	0.037	0.055
DC1206S / DC1206T	2.05	1.05	1.80	0.081	0.041	0.071
DC1210S / DC1210T	1.90	1.10	2.70	0.075	0.043	0.106
DC1411S / DC1411T	1.10	1.80	2.25	0.043	0.071	0.089
DC1813S / DC1813T	2.70	1.40	3.40	0.106	0.055	0.134
DC2010S / DC2010T	3.45	1.25	2.70	0.136	0.049	0.106
DC2220S / DC2220T	3.75	1.55	5.40	0.148	0.061	0.213
DC2413S / DC2413T	2.60	2.25	2.30	0.102	0.089	0.091
DC2512S / DC2512T	4.85	1.25	3.40	0.191	0.049	0.134
DC2917S / DC2917T	4.15	2.05	4.60	0.163	0.081	0.181
DC2924S / DC2924T	3.85	2.35	4.15	0.152	0.093	0.163

**Top View (SMD Footprint)**



(Representative drawing only - not to scale)