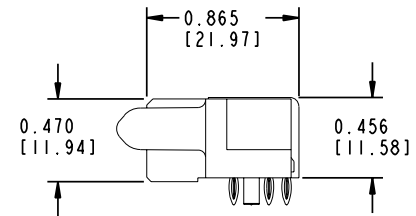
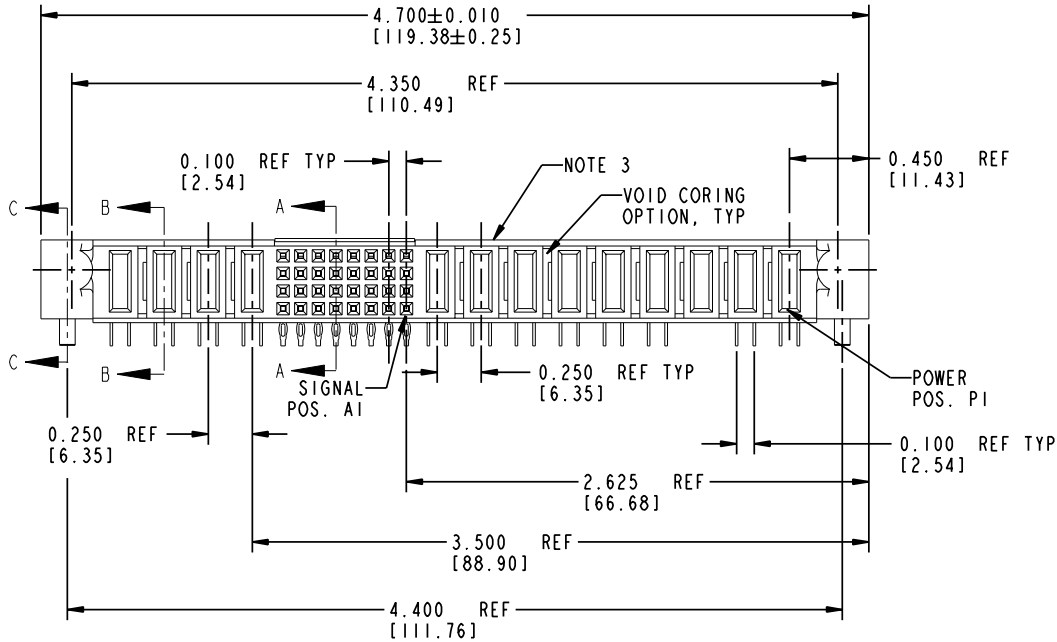


Tous droits strictement réservés. Reproduction ou communication à des tiers interdite sous quelque forme que ce soit sans autorisation écrite du propriétaire. Propriété de c FCI. Droits de reproduction FCI.

All rights strictly reserved. Reproduction or issue to third parties in any form whatever is not permitted without written authority from the proprietor. Property of FCI. Copyright FCI.

PRODUCT No.	ROWS	POWER				SIGNAL					POWER					E1									
		E2	P13	P12	P11	P10	8	7	6	5	4	3	2	1	P9		P8	P7	P6	P5	P4	P3	P2	P1	
51823-001 NOTE: ②	D C B A		PF	PF	PE	PF	SS	SS	SS	SS	SS	SS	SS	SS	SS	SS	SS	SS	SS	SS	SS	SS	SS	SS	
			PF	PF	PE	PF	RR	RR	RR	RR	RR	RR	RR	RR	RR	RR	RR	RR	RR	RR	RR	RR	RR	RR	
			PF	PF	PE	PF	PP	PP	PP	PP	PP	PP	PP	PP	PP	PP	PP	PP	PP	PP	PP	PP	PP	PP	
			PF	PF	PE	PF	NN	NN	NN	NN	NN	NN	NN	NN	NN	NN	NN	NN	NN	NN	NN	NN	NN	NN	



CODE	DIM "M" ±0.010 [0.25]	CONTACT TYPE
N	N/A	SIGNAL
P	N/A	SIGNAL
R	N/A	SIGNAL
S	N/A	SIGNAL
PE	0.042 [1.07]	POWER
PF	0.092 [2.34]	POWER
HA	N/A	HOLD-DOWN
X	OMITTED	OMITTED

mat'l code				NOTE 1		tolerances unless otherwise specified		CUSTOMER		FCI	
ltr	ecn no.	dr	date	linear	.XX±.01/0.X±0.3	projection	COPY	www.fciconnect.com		title	
A	V02301	CGD	09-07-00		.XXX±.005/0.XX±0.13			9P + 32S + 4P		RIGHT ANGLE PRESS-FIT RECEPTACLE	
B	V02786	JWS	11-30-00		.XXX±.0020/0.XXX±.051			product family		code	
C	V12180	JRW	09-11-01	angles	0°±2°			PWRBLADE		213	
D	V20682	JWS	04-08-02	dr	C.DAILY 06/21/00			size		sheet	
E	V21515	TAB	10-08-02	enr	E.TREECE 6/21/00			51823		1 of 4	
F	DG05-0227	SJ	07/15/05	chr	E.TREECE 06/21/00			scale			
				appd	E.TREECE 06/21/00			1:1			
sheet index	revision	F	F	F							
	sheet	1	2	3							

Pro/E

cage code 22526

PDM: Rev:F

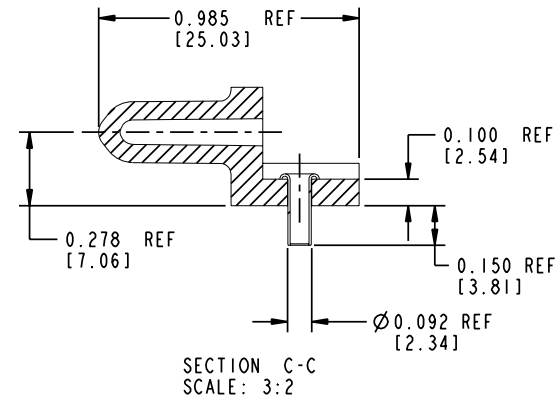
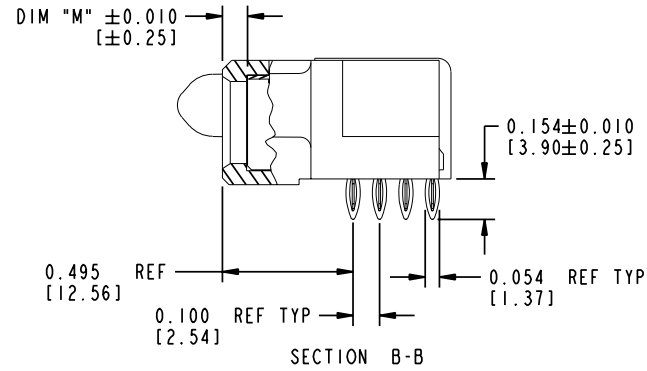
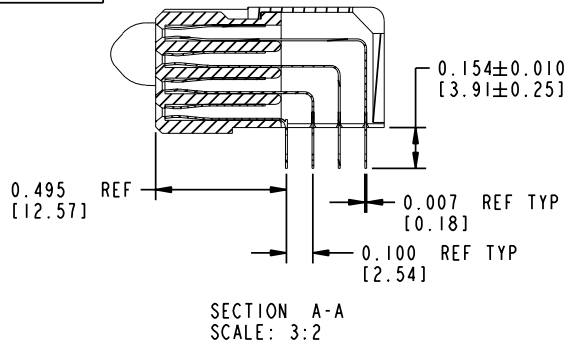
STATUS: Released

Printed: Dec 20, 2010

Tous droits strictement réservés. Reproduction ou communication à des tiers interdite sous quelque forme que ce soit sans autorisation écrite du propriétaire. Propriété de c FCI. Droits de reproduction FCI.

All rights strictly reserved. Reproduction or issue to third parties in any form whatever is not permitted without written authority from the proprietor. Property of FCI. Copyright FCI.

PRODUCT NUMBER
51823-001..
 NOTE: ②



mat'l code		NOTE 1		tolerances unless otherwise specified		CUSTOMER		 www.fciconnect.com	
ltr	ecn no.	dr	date	linear	.XX±.01/0.X±0.3	COPY		title	
F					.XXX±.005/0.XX±0.13	projection		9P + 32S + 4P	
				angles	.XXX±.0020/0.XXX±.051			RIGHT ANGLE PRESS-FIT RECEPTACLE	
				dr	0°±2°			product family	
				enr	C. DAILY 06/21/00	INCH/MM		PWRBLADE	
				chr	E. TREECE 6/21/00	scale		code	
				appd	E. TREECE 06/21/00	3:2		213	
sheet index		revision sheet						size	
								dwg no	
								51823	
								sheet	
								2	

Pro/E

cage code 22526

PDM: Rev:F

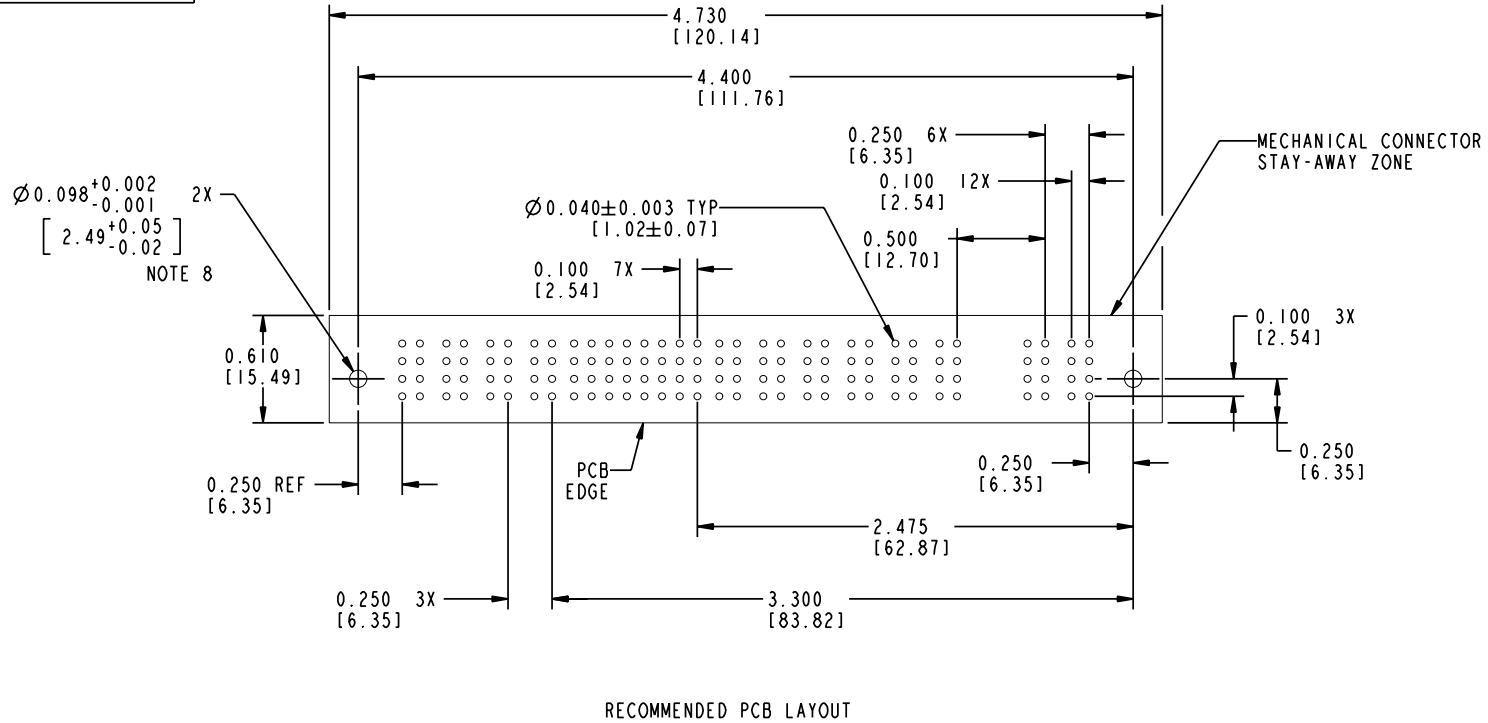
STATUS: Released

Printed: Dec 20, 2010

Tous droits strictement réservés. Reproduction ou communication a des tiers interdite sous quelque forme que ce soit sans autorisation écrite du propriétaire. Propriété de c FCI. Droits de reproduction FCI.

All rights strictly reserved. Reproduction or issue to third parties in any form whatever is not permitted without written authority from the proprietor. Property of FCI. Copyright FCI.

PRODUCT NUMBER
51823-001..
 NOTE: ②



RECOMMENDED PCB LAYOUT

mat'l code				NOTE 1		tolerances unless otherwise specified		CUSTOMER		 www.fciconnect.com	
ltr	ecn no.	dr	date	linear	.xx±.01/0.xx±0.3	COPY		projection		title	
F					.xxx±.005/0.xxx±0.13					9P + 32S + 4P RIGHT ANGLE PRESS-FIT RECEPTACLE	
				angles	.xxx±.0020/0.xxx±.051					product family	
				dr	0°±2°			INCH/MM		PWRBLADE	
				enr	C. DAILY 06/21/00			A		code	
				chr	E. TREECE 6/21/00			scale		213	
				appd	E. TREECE 06/21/00			1:1		sheet	
sheet index		revision sheet								3	

cage code **22526**

Pro/E

PDM: Rev:F

STATUS:Released

Printed: Dec 20, 2010

Tous droits strictement réservés. Reproduction ou communication a des tiers interdite sous quelque forme que ce soit sans autorisation écrite du propriétaire. Propriété de c FCI. Droits de reproduction FCI.

All rights strictly reserved. Reproduction or issue to third parties in any form whatever is not permitted without written authority from the proprietor. Property of FCI. Copyright FCI.

PRODUCT NUMBER
51823-001..
 NOTE: (2)

CONNECTOR NOTES:

- HOUSING MATERIAL: UL 94 V-0 GLASS FILLED HIGH TEMP THERMOPLASTIC
 SIGNAL CONTACT MATERIAL: COPPER ALLOY
 POWER CONTACT MATERIAL: COPPER ALLOY
- PLATING:
 - 51823 Singal Pin:30u"/0.76um Au OVER 50u"/1.27um Ni ON THE WHOLE AREA.
 Power Pin:30u"/0.76um Au OVER 50u"/1.27um Ni ON THE CONTACT AREA,
 AND 100u"/2.54um SnPb PLATING OVER 50u"/1.27um Ni ON THE TERMINATION SECTION.
 - 51823LF Singal Pin:30u"/0.76um Au OVER 50u"/1.27um Ni ON THE WHOLE AREA.
 Power Pin:30u"/0.76um Au OVER 50u"/1.27um Ni ON THE CONTACT AREA,
 AND 78u"/2.00um Sn PLATING OVER 50u"/1.27um Ni ON THE TERMINATION SECTION.

PART NUMBER 51823LF MEETS EUROPEAN UNION DIRECTIVE AND OTHER COUNTRY REGULATIONS AS DESCRIBED IN GS-22-008.

THE HOUSING WILL WITHSTAND EXPOSURE TO 260° PEAK TEMPERATURE FOR 10 SECONDS IN A WAVE SOLDER APPLICATION WITH A CIRCUIT BOARD.

- "MANUFACTURER" NAME, P/N, AND DATE CODE TO APPEAR ON THIS SURFACE
- PRODUCT SPECIFICATION GS-12-149
- USE CAM TOOL NUMBER 166459-003

PCB NOTES:

- ALL DIMENSIONS ARE BASIC UNLESS OTHERWISE SPECIFIED.
- ALL THROUGH HOLES ARE LOCATED WITH A TRUE POSITION OF 0.004 [0.10]
- ALL HOLE DIAMETERS ARE FINISHED HOLE SIZE
- Ø0.098 [2.49] THROUGH HOLES ARE UNPLATED AND ARE USED TO ALIGN PCB WITH FCI INSERTION TOOLING.
- Ø0.0453±0.0010 [1.151±0.025] DRILLED HOLES PLATED WITH 0.0003 [0.008] MIN SnPb OVER 0.001 [0.03] TO 0.003 [0.08] Cu PLATING TO ACHIEVE A Ø0.040±0.003 [1.02±.07] HOLE.

CONFIDENTIAL

mat'l code				4		tolerances unless otherwise specified		CUSTOMER		A FCI www.fciconnect.com	
ltr	ecn no.	dr	date	linear	.XX±.01/0.X±0.3	COPY		projection		title	
F					.XXX±.005/0.XX±0.13					9P + 32S + 4P RIGHT ANGLE PRESS-FIT RECEPTACLE	
				angles	.XXX±.0020/0.XXX±.051					product family	
					0°±2°					PWRBLADE	
				dr	C.DAILY 06/21/00	INCH/MM		size		code	
				enr	E.TREECE 6/21/00	1:1		dwg no		213	
				chr	E.TREECE 06/21/00			51823		sheet	
				appd	E.TREECE 06/21/00			A		4	
sheet index	revision sheet										

Pro/E

cage code 22526

PDM: Rev:F

STATUS:Released

Printed: Dec 20, 2010