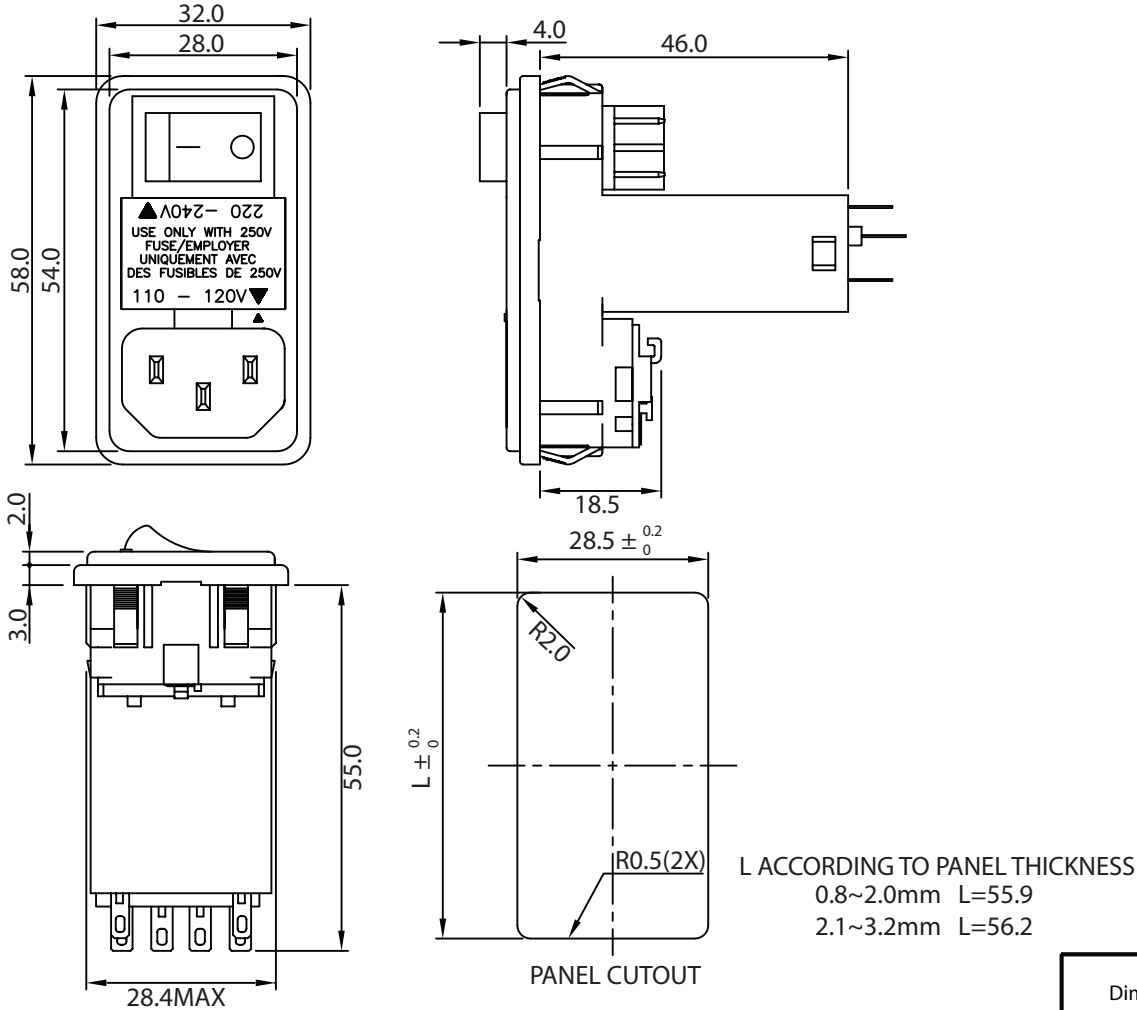


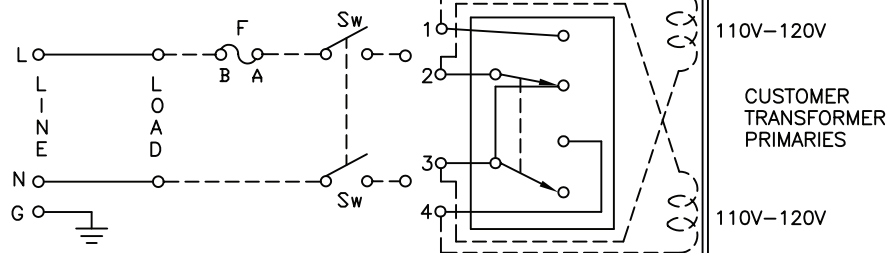
THESE DRAWINGS ARE THE PROPERTY OF QUALTEK ELECTRONICS AND NOT TO BE REPRODUCED FOR OR COMMUNICATED TO A THIRD PARTY WITHOUT THE EXPRESS WRITTEN PERMISSION OF AN OFFICER OF QUALTEK ELECTRONICS.

REVISION			
REV.	DESCRIPTION	DATE	APPROVED
B	Updated Specifications	08-26-08	LY

PHYSICAL DIMENSIONS:



ELECTRICAL SCHEMATIC:



ELECTRICAL CHARACTERISTICS:

- 1-1. VOLTAGE RATING.....250VAC
- 1-2. CURRENT RATING
A. @ 250 VAC (UL, CSA).....10 A RMS MAX
B. @ 250 VAC (SEMKO).....6.3 A RMS MAX
- 1-3. HIPOT RATING (FOR ONE MINUTE)
A. LINE TO GROUND.....2000 VAC
B. LINE TO LINE.....2000 VAC
- 1-4. MINIMUM INSERTION RESISTANCE (FOR ONE MINUTE @ 500VDC)
A. LINE TO GROUND.....10M OHM
B. LINE TO LINE.....10M OHM
- 1-5. SAFETY: **UL** **CSA** **SEMKO**
- 1-6. SINGLE FUSE HOLDER
- 1-7. RECOMMENDED FUSE SIZE: 5x20mm
- 1-8. RoHS COMPLIANT

CONTROLLED

Dim range (mm)	Tolerance +/- (mm)	Qualtek Electronics Corp. PPC DIVISION		
		Part Number: 766-32/001	RoHS Compliant	
0-1	0.15	Description: MULTI-FUNCTION MODULE		
1-6	0.20			
6-18	0.30	UNIT: mm	REV. B	
18-50	0.50		Approved / Date	
50-120	0.70	Drawn / Date	Checked / Date	Approved / Date
120-250	0.90	R.Nuti 09-11-07	09-11-07	JJH / 09-11-07
250-500	1.20			